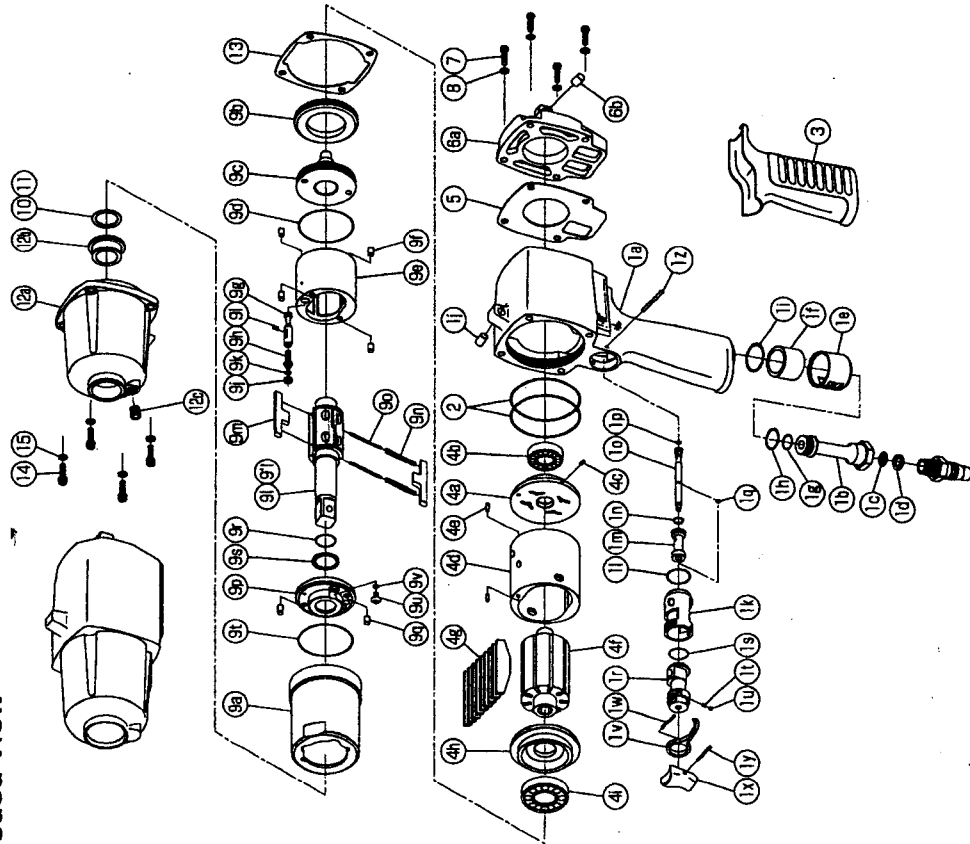




IMPULSE WRENCH

MODEL (YES.No.)	TOOL No.
Y-100 (02)	0334 0000 0200
Y-100E (02)	0334 0000 0209

Exploded View



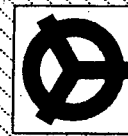
Parts List

No.	Name of Parts	Par Set	Parts No.	No.	Name of Parts	Par Set	Parts No.
1	Motor Case Assy.	1set	0334 0011 0199	9	Liner Case Assy.	1set	0334 0422 01 99
	(a) Motor Case	1	*		(a) Liner Case	1	0334 0422 00 00
	Hose Joint Assy.	1set	0334 0113 0199		(b) Liner Cap	1	0334 0423 00 00
	(a) Hose Joint	1	0334 0113 0100		(c) Liner Upper Plate	1	0334 0424 00 00
	(c) Strainer	1	0259 0111 00 00		(d) O - Ring (N40)	1	9010 4017 00 00
	(d) Washer (7.5x1.1x2)	1	8042 2008 00 00		Liner Assy.	1set	0334 0425 01 99
	(e) Exhaust Cover	1	0334 0016 00 00		(e) Liner	1	*
	(f) Silencer Sheet	1	0334 0032 00 00		(f) Pin (4x7 41-44 HRC)	4	8052 1037 00 00
	(g) O - Ring (N12)	1	9010 4005 00 00		(g) Relief Valve	1	0334 0245 00 00
	(h) O - Ring (N16)	1	9010 4009 00 00		(h) Adjust Bolt	1	0334 0522 00 00
	(i) O - Ring (N22)	1	9010 4011 00 00		(i) Pin (2x6)	1	8051 1038 00 00
	(j) Spring Pin (6x10)	1	9250 1082 00 00		(j) Back-up Ring (4x6.2x1.25)	1	9090 1028 00 00
	3 Stage Throttle Assy.	1set	0334 0186 00 99		(k) O - Ring (N4)	1	9010 4021 00 00
	(k) Throttle Bushing	1	0334 0104 00 00		(l) Main Shaft	1	0334 0614 01 01
	(l) O - Ring (N18)	1	9010 4023 00 00		(m) Blade	2	0334 0719 00 00
	Throttle Rod Bushing Assy.	1set	0334 0105 00 99		(n) Spring (2.7x34)	2	8020 1314 00 00
	(m) Throttle Rod Bushing	1	0334 0105 00 00		(n) Spring (4x34)	2	8020 1313 00 00
	(n) O - Ring (P8 Hs90)	1	9010 1048 00 00		Liner Lower Plate Assy.	1set	0334 0426 01 99
	Throttle Rod Assy.	1set	0334 0106 00 99		(d) Liner Lower Plate	1	*
	(o) Throttle Rod	1	0334 0106 00 00		(g) Pin C (4x8)	2	8410 2032 00 00
	(p) O - Ring (N4 Hs90)	1	9010 4058 00 00		(f) O - Ring (P16 Hs90)	1	9011 0008 00 00
	(q) Snap Ring (ETW-2.8)	1	9040 5008 00 00		(s) Back-up Ring (6x20x1.5)	1	9090 1012 00 00
	(r) Reverse Valve	1	0334 0005 00 00		(t) O - Ring (N42)	1	9010 4018 00 00
	(s) O - Ring (N15)	1	9010 4008 00 00		(u) Oil Plug (M4)	1	0048 0010 00 00
	(t) Spring (3x4)	1	8020 1246 00 00		(v) O - Ring (N4)	1	9010 4021 00 00
	(u) Ball (1/8)	1	9150 3009 00 00		10* Washer (16.5x22x0.3)	1	8041 5038 00 00
	(v) Reverse Lever	1	0334 0007 00 00		11* Washer (16.5x22x0.5)	1	8041 5039 00 00
	(w) Spring Pin (2x12)	1	9250 1015 00 00		12 Hammer Case Assy.	1set	0334 0401 00 99
	(x) Throttle Knob	1	0158 0153 00 00		(a) Hammer Case	1	0334 0401 00 00
	(y) Spring Pin (1.5x14)	1	9250 1005 00 00		(b) Main Shaft Bushing	1	0141 0612 00 00
	(z) FF Pin (2.5x22)	1	8055 1062 00 00		(c) Socket Plug (PT1/8)	1	8210 5001 00 00
2	O - Ring (N63)	2	9010 4024 00 00		13 S - Packing (B)	1	0334 0003 00 02
3	Rubber Grip	1	0334 0144 00 00		14 Hexagon Socket Bolt (M5 x 16)	4	8070 3051 00 00
4	Motor Assy.	1set	0334 0305 01 99		15 Spring Washer (M5)	4	9200 3005 00 00
	Upper Plate Assy.	1set	0334 0303 01 99		Parts for Y-100E		
	(a) Upper Plate	1	0334 0303 01 00	9*	Liner Case Assy.	1set	0334 0422 01 98
	(b) Ball Bearing (6001CM)	1	9102 1011 00 00		(l) Main Shaft Assy. (E-type)	1set	0334 0614 01 99
	(c) Pin (2x5)	1	8051 1037 00 00		Standard Accessories		
	Cylinder Assy.	1set	0334 0304 01 99		Protector	1	0334 0029 00 00
	(d) Cylinder	1	*		Touch Joint (1/4-02)	1	9690 0002 00 00
	(e) Pin (2.5x6)	2	8055 1053 00 00		Hex. Wrench (H5)	1	9610 1006 00 00
	(f) Rotor	1	0334 0305 00 00		Hex. Wrench (H2x65x65)	1	9610 1013 00 00
	(g) Vane	9	0334 0306 00 00				
	Lower Plate Assy.	1set	0334 0307 01 99				
	(h) Lower Plate	1	0334 0307 01 00				
	(i) Ball Bearing (16003CM)	1	9102 1012 00 00				
5	S - Packing (A)	1	0334 0003 00 01				
6	Motor Case Cover Assy.	1set	0334 0001 00 99				
	(a) Motor Case Cover	1	0334 0001 00 00				
	(b) Spring Pin (6x10)	1	9250 1082 00 00				
7	Hexagon Socket Bolt (M5x14)	4	8071 1009 00 00				
8	Spring Washer (M5)	4	9200 3005 00 00				

The part "*" can not be supplied individually.

So please order it as a unit of assembly shown by arrow mark (↑).

*marked parts; use one of them.



YOKOTA EUROPA BV

P.O. BOX 392 NL-1000 AJ AMSTERDAM PHONE 020-5318800 FAX 020-5318808
 e-mail: info@impulsetools.com http://www.impulsetools.com
 Hydraulic Impulse Wrenches, Impact Wrenches, Drill Grinders, Screw Drivers, Chippers, Scales, Pumps.