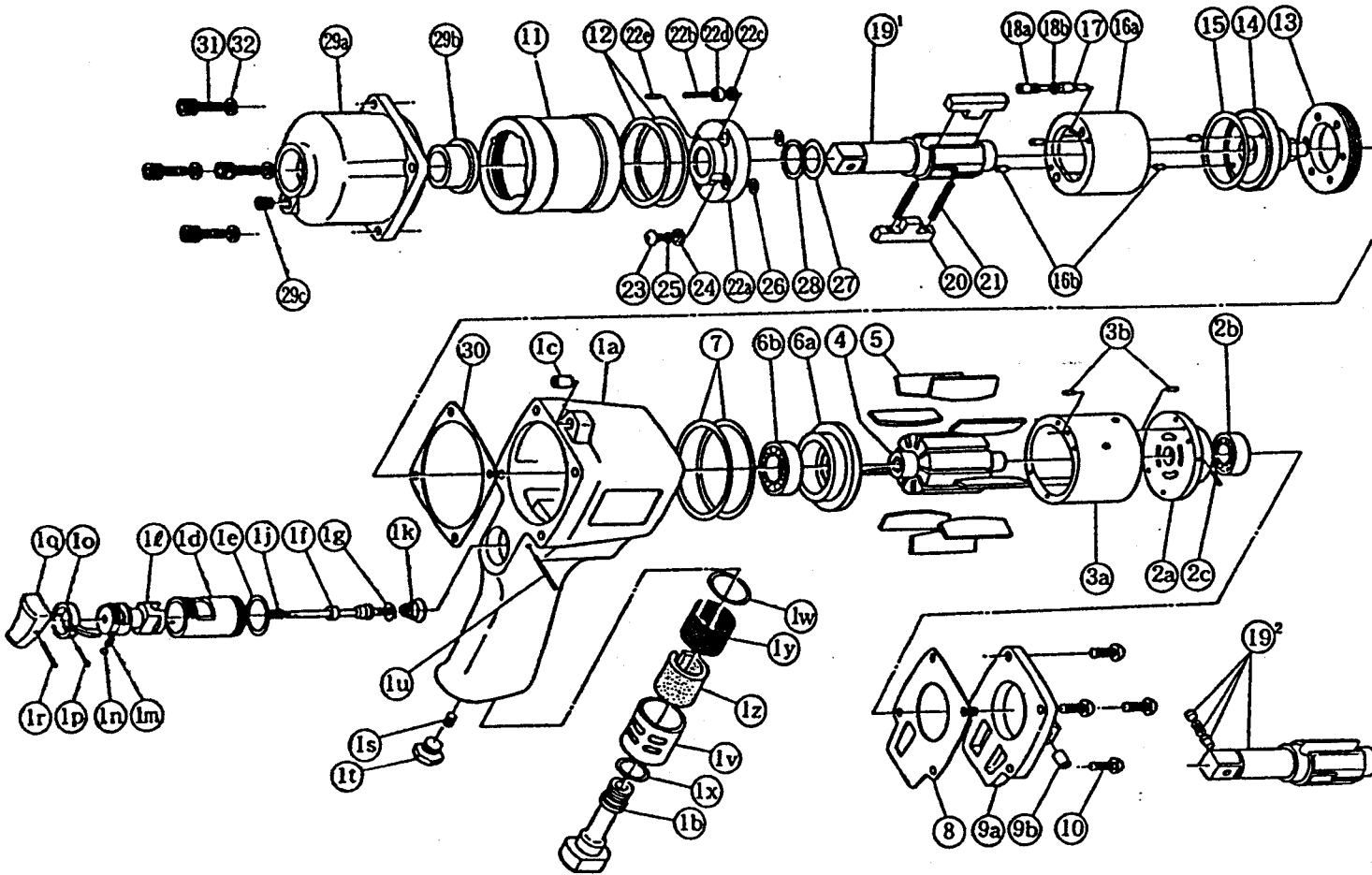


IMPULSE WRENCH

MODEL (YES. NO.)	TOOL NO.
Y-90 (01)	0141 0000 01 00

EXPLODED VIEW



YOKOTA EUROPA BV

P.O. BOX 392 NL-1000 AJ AMSTERDAM PHONE 020-625 29 53 FAX 020-625 35 69

Hydraulic Impulse Wrenches, Impact Wrenches, Drills, Grinders, Screwdrivers, Chippers, Scalers, Pumps.

PARTS LIST

No.	Name of Parts	Per Set	Parts No.	No.	Name of Parts	Per Set	Parts No.
1	Motor Case Assy.	1set	0141 0011 01 99	10	Hex. Socket Button Bolt(M5×18)	4	8071 1012 00 00
	(a) Motor Case	1	0141 0011 01 00	11	Liner Case	1	0141 0422 01 00
	(b) Hose Joint	1	0141 0113 00 00	12	"O" Ring (N42)	2	9010 4018 00 00
	(c) Spring Roll Pin (6×10)	1	9250 1082 00 00	13	Liner Cap	1	0141 0423 01 00
	Throttle Bushing Assy.	1set	0141 0104 01 99	14	Liner Upper Plate	1	0141 0424 00 00
	(d) Throttle Bushing	1	* ↑	15	"O" Ring (N36)	1	9010 4015 00 00
	(e) "O" Ring (N16)	1	9010 4009 00 00	16	Liner Assy.	1set	0141 0425 01 99
	Throttle Rod Assy.	1set	0141 0106 02 99	(a) Liner	1	* ↑	
	(f) Throttle Rod	1	* ↑	(b) AA Pin (3×5)	4	8051 3094 00 00	
	(g) "O" Ring (No.3)	1	9010 3021 00 00	17	Relief Valve	1	0141 0245 00 00
	(h) Not Used			18	Spring Guide(B) Assy.	1set	0077 0510 00 99
	(i) Not Used			(a) Spring Guide(B)	1	* ↑	
	(j) Spring (5.2×4.0)	1	8020 1284 00 00	(b) "O" Ring (N2)	1	9010 4001 00 00	
	(k) Conical Spring (5.0×11.5×12)	1	8020 3061 00 00	19 ²	Main Shaft (P) Assy.	1set	0141 0614 00 59
	(l) Reverse Valve	1	0141 0005 01 00	20	Blade	2	0141 0719 00 00
	(m) Spring (3×4)	1	8020 1246 00 00	21	Spring (4×32)	2	8020 1251 00 00
	(n) Ball (1/8)	1	9150 3009 00 00	22	Liner Lower Plate(A) Assy.	1set	0141 0426 01 98
	(o) Reverse Lever	1	2315 0007 00 00	(a) Liner Lower Plate	1	* ↑	
	(p) Spring Roll Pin (2×12)	1	9250 1015 00 00	(b) Screw(3×14)	1	9480 2029 00 00	
	(q) Throttle Knob	1	0094 0153 00 00	(c) Nylon Bushing (M3)	1	0078 0431 01 00	
	(r) Spring Roll Pin (1.5×14)	1	9250 1005 00 00	(d) Washer (4.3×6.6×2.2)	1	8040 1136 00 00	
	(s) Screw (M5×5)	1	9480 2016 00 00	(e) Spring Roll Pin (3×6)	1	9250 2001 00 00	
	(t) Hexagon Oil Plug(PS1/8×6)	1	8230 2002 00 00	23	Oil Plug (M4)	1	0048 0010 00 00
	(u) AA Pin (3×23.8)	1	8051 3041 00 00	24	Washer (6.5×8.5×1.1)	1	8040 1073 00 00
	(v) Exhaust Cover	1	0141 0016 00 00	25	"O" Ring (N4)	1	9010 4021 00 00
	(w) "O" Ring (N20)	1	9010 4010 00 00	26	"O" Ring (N5)	2	9010 4033 00 00
(x) "O" Ring (N15)	1	9010 4008 00 00	27	"O" Ring (P16)	1	9010 1015 00 00	
(y) Silencer Sheet (A)	1	0141 0032 00 01	28	Backup Ring (16×20×1.5)	1	9090 1012 00 00	
(z) Silencer Sheet (B)	1	0141 0032 00 02	29	Hammer Case Assy.	1set	0141 0401 01 99	
2	Upper Plate Assy.	1set	0141 0303 01 99	(a) Hammer Case	1	0141 0401 01 00	
	(a) Upper Plate	1	0141 0303 01 00	(b) Main Shaft Bushing	1	0141 0612 00 00	
	(b) Ball Bearing (# 6900)	1	9100 1046 00 00	(c) Socket Plug(PT1/8-28)	1	8210 2001 00 00	
	(c) AA Pin (2×6.8)	1	8051 3017 00 00	30	S - Packing (B)	1	0141 0003 01 02
3	Cylinder Assy.	1set	0141 0304 01 99	31	Hexagon Socket Plug(M5×18)	4	8070 3052 00 00
	(a) Cylinder	1	* ↑	32	Spring Washer (M5)	4	9200 3005 00 00
(b) FF Pin (2.5×6)	2	8055 1053 00 00	Optional Parts				
4	Rotor	1	0141 0305 01 00	19 ¹	Main Shaft (1/2sq)	1	0141 0614 01 01
5	Vane	9	0141 0306 01 00				
6	Lower Plate Assy.	1set	0141 0307 01 99				
	(a) Lower Plate	1	0141 0307 01 00				
(b) Ball Bearing (# 6902)	1	9100 1036 00 00					
7	"O" Ring (N46)	2	9010 4032 00 00				
8	S - Packing (A)	1	0141 0003 01 01				
9	Motor Case Cover Assy	1set	0141 0001 01 99				
	(a) Motor Case Cover	1	* ↑				
(b) Spring Roll Pin (6×10)	1	9250 1082 00 00					

The part marked "*" can not be supplied individually. So please order it as a unit of assembly shown by arrow mark (↑).