

Parts for Liner Case

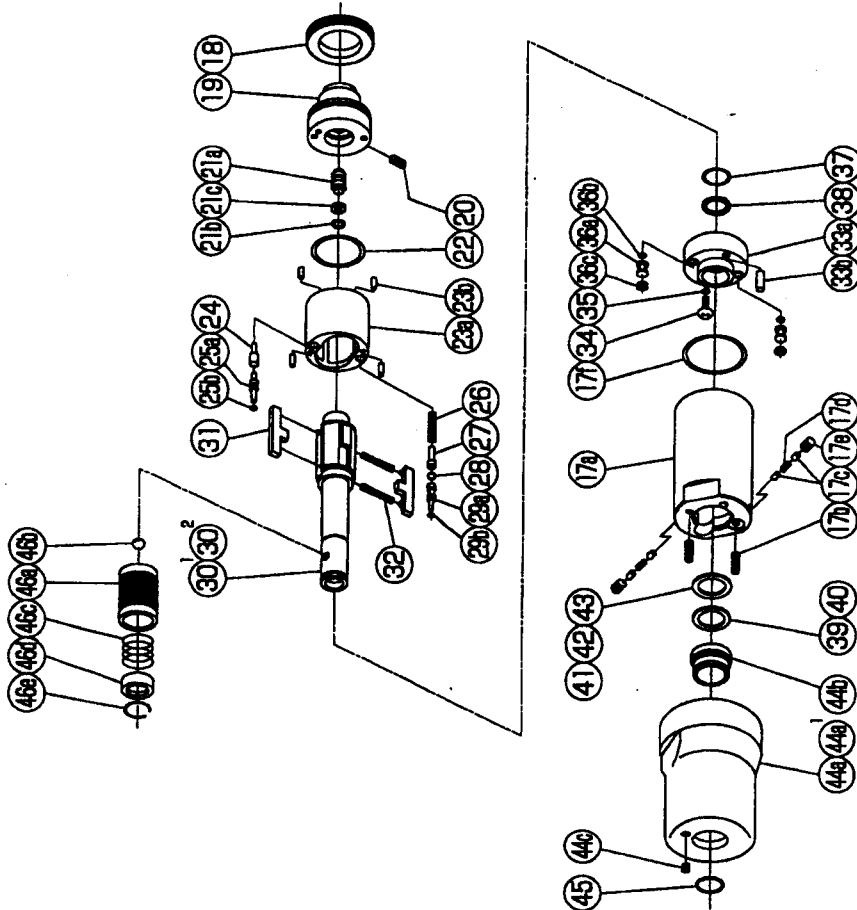
No.	Name of Parts	Per Set	Parts No.
17	Liner Case Assy. 1	1set	0169 0422 00 89
	(a) Liner Case	1	*
	(b) Set Screw (M3x8)	2	9480 2024 00 00
	(c) Rubber Plate	4	0169 0047 00 00
	(d) Spring (2.4x6)	2	8020 1287 00 00
	(e) Set Screw (M3x3)	2	9480 2028 00 00
	(f) O-Ring (N26)	1	9010 4013 00 00
18	Liner Cap	1	0169 0423 00 00
19	Liner Upper Plate	1	0169 0424 00 00
20	Set Screw (M3x5)	1	9480 2001 00 00
21	Sensor Assy.	1set	0164 0794 00 89
	(a) Sensor	1	*
	(b) O-Ring (1.76x3x6.5)	1	9010 8027 00 00
	(c) Back-up Ring (32x6x15)	1	9090 2006 00 00
22	O-Ring (N22)	1	9010 4011 00 00
23	Liner Assy.	1set	0169 0425 01 89
	(a) Liner	1	*
	(b) AA Pin (2x5 41-44HC)	4	8052 3002 00 00
24	Relief Valve	1	0098 0245 00 00
25	Push Shaft Assy.	1set	0169 0256 00 89
	(a) Push Shaft	1	*
	(b) O-Ring (0.7x2x3.4)	1	9010 8020 00 00
26	Spring (3.4x6.4)	1	8020 1332 00 00
27	Spring Guide	1	0164 0510 01 00
28	Ball (3/32)	1	8150 3001 00 00
29	Check Valve Assy	1set	0169 0251 00 89
	(a) Check Valve	1	*
	(b) O-Ring (0.7x2x3.4)	1	9010 8020 00 00
30	Main Shaft Assy. (A-type)	1set	0169 0614 00 51
31	Blade	2	0273 0719 01 00
32	Spring (2.85x1.9)	2	8020 1282 00 00
33	Liner Lower Plate Assy.	1set	0169 0426 00 89
	(a) Liner Lower Plate	1	*
	(b) Spring Pin (3x8)	1	9250 2022 00 00
34	Oil Plug	1	0081 0010 01 00
35	O-Ring (N3)	1	9010 4026 00 00
36	Oil Stop Cap Assy.	2set	0081 0602 00 89
	(a) Oil Stop Cap	1	*
	(b) O-Ring (N2)	1	9010 4001 00 00
	(c) Back-up Ring (N2)	1	9090 2001 00 00
37	O-Ring (JASO1011)	1	9011 3001 00 00
38	Back-up Ring (11x14x0.8)	1	9090 1020 00 00
*39	Washer (11.5x16x0.3)	1	8041 5026 00 00
*40	Washer (11.5x16x0.5)	1	8041 5028 00 00
*41	ST-Packing (11.2x15.5x0.1)	1	9011 1033 00 00
*42	ST-Packing (11.2x15.5x0.2)	1	9011 1034 00 00
*43	ST-Packing (11.2x15.5x0.3)	1	9011 1035 00 00

The part "*" can not be supplied individually.
So please order it as a unit of assembly shown by arrow mark (↑).
☆marked parts; use one of them.

IMPULSE WRENCH

MODEL (YES.No.)	TOOL No.
Y-T40A (03)	0169 0000 0301
Y-T40B (03)	0169 0000 0302
Y-T40A-D(03)	0169 0000 0312
Y-T40B-D(03)	0169 0000 0313

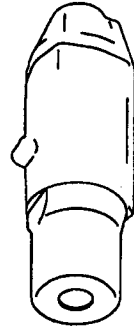
Exploded View of Liner Case and Hammer Case



Parts for Hammer Case

No.	Name of Parts	Per Set	Parts No.
44	Hammer Case Assy.	1set	0169 0401 00 89
	(a) Hammer Case	1	0169 0401 00 00
	(b) Main Shaft Bushing	1	0169 0612 00 00
	(c) Socket Plug	1	8210 7001 00 00
45	Snap Ring	1	9040 2003 00 00
46	Bit Chuck	1	2057 0414 00 89
	(a) Bit Chuck	1	2057 0414 00 00
	(b) Bell (1/8)	1	8150 3009 00 00
	(c) Spring (13.5x10)	1	8020 1340 00 00
	(d) Spring Washer	1	2331 0419 00 00
	(e) Retaining Ring (10x1)	1	8030 1009 00 00
30*	Main Shaft (B-type) Parts for Y-T40B	1set	0169 0614 00 52
	Special Parts for D-version		
	Motor Case Assy.	1set	0169 0011 02 84
	(a) Motor Case (C)	1	*
	Throttle Assy.	1set	0169 0166 01 84
	(v) Throttle Knob (A)	1	0286 0153 00 01
	(w) Spring Pin (1.5x8)	1	9250 1003 00 00
47	Lever Guide	1	0160 0207 00 00
48	Spring Pin (3x18)	1	9250 2018 00 00
49	Throttle Lever	1	0158 0110 00 00
44'	Hammer Case Assy. (a) Hammer Case (B)	1set	0169 0401 00 84
	Standard Accessories		
	Swivel Joint	1	9690 0015 00 00
	Hex. Wrench (H1.5x65x65)	1	9610 1012 00 00
	Hex. Wrench (H2x65x65)	1	9610 1013 00 00
	Protector	1	0169 0029 00 00

The part "*" can not be supplied individually.
So please order it as a unit of assembly shown by arrow mark (↑).



YOKOTA EUROPA BV

P.O. BOX 392 NL-1000 AJ AMSTERDAM, PHONE 020-5318506, FAX 020-5318608
 e-mail: info@impulsetools.com, http://www.impulsetools.com
 Hydraulic Impulse Wrenches, Impact Wrenches, Drills, Grinders, Screw Drivers, Drivers, Sockets, Pumps

Parts for Motor Case

No.	Name of Parts	Per Set	Parts No.
1	Motor Case Assy.	1set	0169 0011 02 99
	(a) Motor Case	1	*
	(b) Spring Pin (6x10)	1	9250 1082 00 00
	(c) Exhaust Bushing	1	0169 0072 00 00
	Hose Joint Assy.	1set	0276 0113 00 99
	(d) Hose Joint	1	0276 0113 01 00
	(dl) Strainer	1	0269 0111 00 00
	(d2) Washer (7.5x11x2)	1	8042 2008 00 00
	(e) Exhaust Cover	1	0276 0016 00 00
	(f) O-Ring (N20)	1	9010 4010 00 00
	(g) O-Ring (N15)	1	9010 4008 00 00
	(h) Silencer Sheet	1	0276 0032 00 00
	Throttle Assy.	1set	0165 0168 00 99
	Throttle Bushing Assy.	1set	0136 0104 01 99
	(i) Throttle Bushing	1	*
	(j) O-Ring (N15)	1	9010 4008 00 00
	Throttle Rod Bushing Assy.	1set	0166 0105 00 99
	(k) Throttle Rod Bushing	1	*
	(l) O-Ring (No.3)	1	9010 3021 00 00
	Throttle Rod Assy.	1set	0228 0108 01 99
	(m) Throttle Rod	1	*
	(n) O-Ring (N2)	1	9010 4001 00 00
	(o) Snap Ring (ETW-2.6)	1	9040 5008 00 00
	(p) Conical Spring (7.2x11.5x6)	1	9020 3064 00 00
	(q) Reverse Valve	1	0164 0005 00 00
	(r) Spring (3x4)	1	9020 1246 00 00
	(s) Ball (1/8)	1	9150 3009 00 00
	(t) Reverse Lever	1	0169 0007 00 00
	(u) Spring Pin (2x12)	1	9250 1015 00 00
	(v) Throttle Knob	1	9024 0153 00 00
	(w) Spring Pin (1.5x14)	1	9250 1005 00 00
	(x) AA Pin (3x2.6)	1	9051 3040 00 00
	(y) O-Ring (N31.5)	2	9010 4041 00 00
2	Rubber Grip	1	0269 0144 00 00
3	Upper Plate Assy.	1set	0266 0303 00 99
4	(a) Upper Plate	1	0266 0303 00 00
	(b) Ball Bearing (6800ZCM)	1	9102 2001 00 00
5	Cylinder Assy.	1set	0266 0304 02 99
	(a) Cylinder	1	*
	(b) Pin (2.5x5)	1	9051 1071 00 00
6	Rotor	1	0169 0305 00 00
7	Vane	9	0266 0306 01 00
8	Lower Plate Assy.	1set	0266 0307 02 99
	(a) Lower Plate	1	0266 0307 02 00
	(b) Ball Bearing (6800CM)	1	9102 1001 00 00
	(c) Pin (2.5x5)	1	9051 1071 00 00
9	Lower Plate Spacer	1	0169 0311 00 00
10	Motor Case Cover Assy.	1set	0169 0001 00 99
	(a) Motor Case Cover	1	0169 0001 00 00
	(b) Spring (18.5x11)	1	9020 1297 00 00
	(c) Spring (18.5x13)	1	9020 1335 00 00

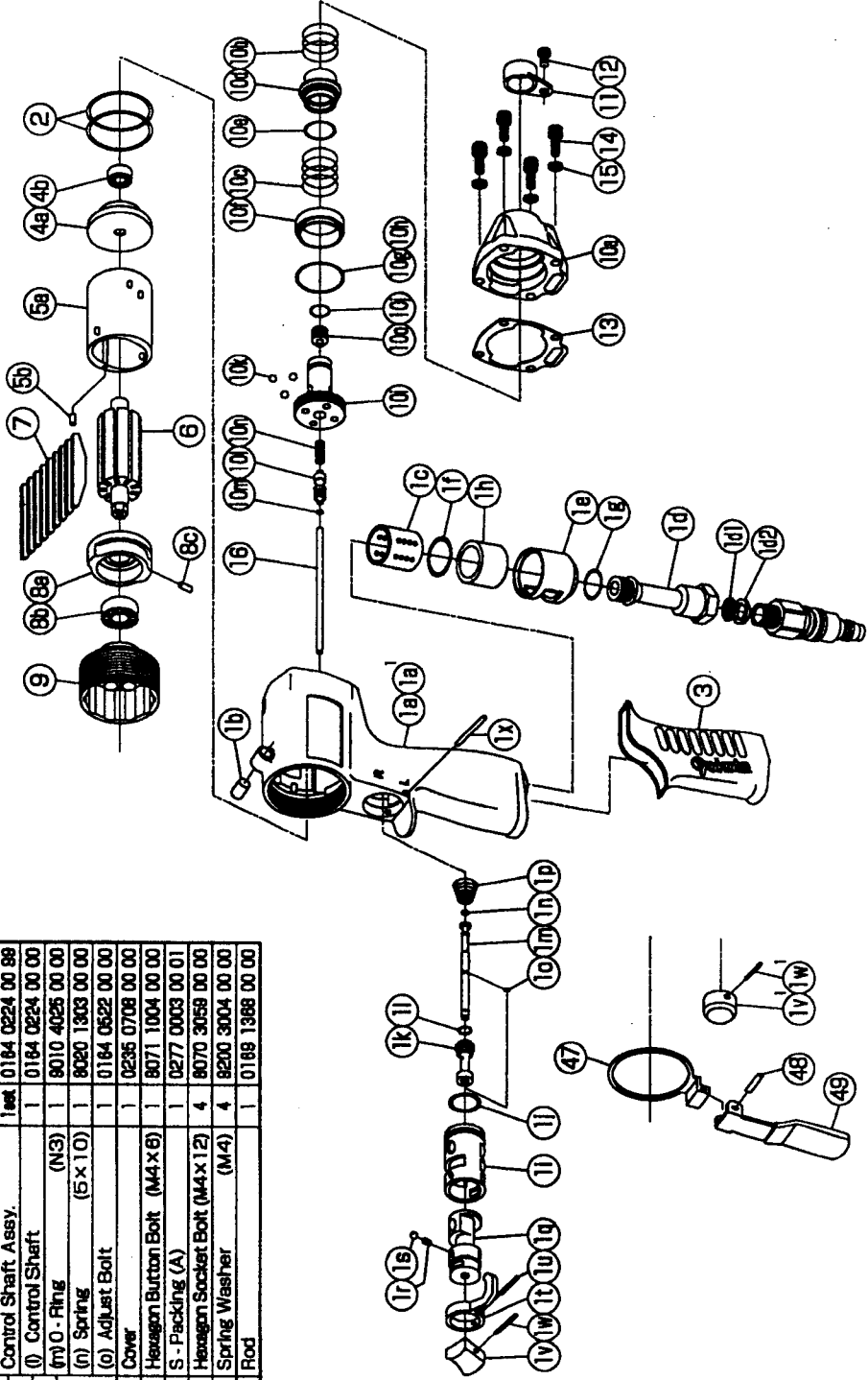
The part "*" can not be supplied individually. So please order it as a unit of assembly shown by arrow mark (↑).
*marked parts may be not used, in some case.

No.	Name of Parts	Per Set	Parts No.
	Control Valve Assy.	1set	0164 0241 00 99
	(d) Control Valve	1	0164 0241 00 00
	(e) O-Ring (P16)	1	9010 1015 00 00
	(f) Control Plate	1	0164 0226 00 00
*	(g) ST-Packing (22.2x24.3x0.1)	1	9011 1077 00 00
*	(h) ST-Packing (22.2x24.3x0.2)	1	9011 1078 00 00
	Control Bushing Assy.	1set	0164 0236 00 99
	(i) Control Bushing	1	0164 0236 00 00
	(j) O-Ring (N10)	1	9010 4004 00 00
	(k) Ball (3.5mm)	3	9160 1004 00 00
	Control Shaft Assy.	1set	0164 0224 00 99
	(l) Control Shaft (N3)	1	0164 0224 00 00
	(m) Spring (5x10)	1	9020 1303 00 00
	(n) Adjust Bolt	1	0164 0522 00 00
	Cover	1	0236 0708 00 00
11	Hexagon Button Bolt (M4x6)	1	9071 1004 00 00
12	S-Packing (A)	1	0277 0003 00 01
13	Hexagon Socket Bolt (M4x12)	4	9070 3059 00 00
14	Spring Washer (M4)	4	9200 3004 00 00
15	Rod	1	0189 1388 00 00

IMPULSE WRENCH

MODEL (YES.No.)	TOOL No.
Y-T40A (03)	0169 0000 0301
Y-T40B (03)	0169 0000 0302
Y-T40A-D(03)	0169 0000 0312
Y-T40B-D(03)	0169 0000 0313

Exploded View of Motor Case



YOKOTA EUROPA BV

P.O. BOX 392 NL-1000 AJ AMSTERDAM PHONE 020-5318900 FAX 020-5318908
E-mail: info@impulse-tools.com URL: www.impulse-tools.com
Hydraulic Impulse Wrenches, Drill Grinders, Screw Drivers, Crimpers, Sockets, Pumps