

Parts for Motor Case

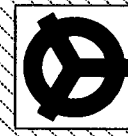
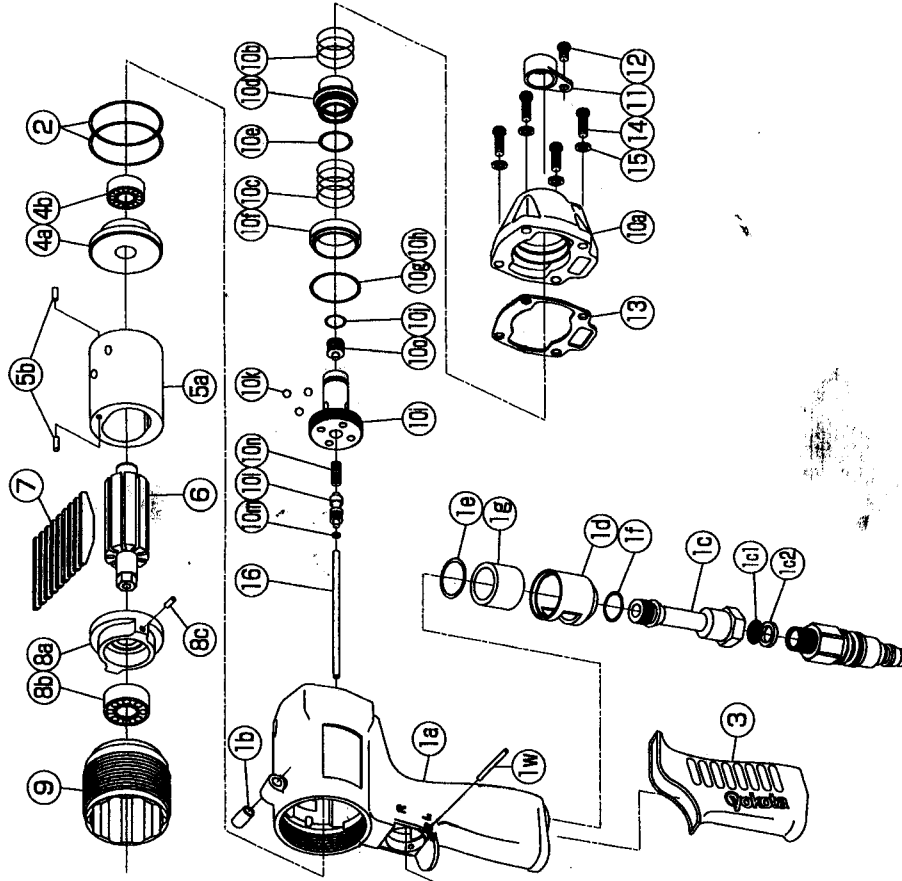
No.	Name of Parts	Per Set	Parts No.
1	Motor Case Assy.	1set	0164 0011 02 99
	(a) Motor Case	1	*
	(b) Spring Pin (6x10)	1	9250 1082 00 00
	Hose Joint Assy.	1set	0276 0113 00 99
	(c) Hose Joint	1	0276 0113 01 00
	(c1) Strainer	1	0259 0111 00 00
	(c2) Washer (7.5x11x2)	1	8042 2008 00 00
	(d) Exhaust Cover	1	0276 0016 00 00
	(e) O - Ring (N20)	1	9010 4010 00 00
	(f) O - Ring (N15)	1	9010 4008 00 00
	(g) Silencer Sheet	1	0276 0032 00 00
	Throttle Assy.	1set	0165 0186 00 99
	Throttle Bushing Assy.	1set	0136 0104 01 99
	(h) Throttle Bushing	1	*
	(i) O - Ring (N15)	1	9010 4008 00 00
	Throttle Rod Bushing Assy.	1set	0165 0105 00 99
	(j) Throttle Rod Bushing	1	*
	(k) O - Ring (No.3)	1	9010 3021 00 00
	Throttle Rod Assy.	1set	0229 0106 01 99
	(l) Throttle Rod	1	*
	(m) O - Ring (N2)	1	9010 4001 00 00
	(n) Snap Ring (ETW-2.8)	1	9040 5008 00 00
	(o) Conical Spring (7.2x11.5x8)	1	8020 3064 00 00
	(p) Reverse Valve	1	0164 0005 00 00
	(q) Spring (3x4)	1	8020 1248 00 00
	(r) Ball (1/8)	1	9150 3009 00 00
	(s) Reverse Lever	1	0158 0007 00 00
	(t) Spring Pin (2x12)	1	9250 1015 00 00
	(u) Throttle Knob	1	2024 0153 00 00
	(v) Spring Pin (1.5x14)	1	9250 1005 00 00
	(w) AA Pin (3x23.8)	1	8051 3041 00 00
2	O - Ring (N35.5)	2	9010 4022 00 00
3	Rubber Grip	1	0259 0144 00 00
4	Upper Plate Assy.	1set	0165 0303 00 99
	(a) Upper Plate	1	0165 0303 00 00
	(b) Ball Bearing (6800ZZOM)	1	9102 2001 00 00
5	Cylinder Assy.	1set	0165 0304 01 99
	(a) Cylinder	1	*
	(b) Pin (2.5x6)	2	8055 1063 00 00
6	Rotor	1	0165 0305 00 00
7	Vane	9	0160 0306 01 00
8	Lower Plate Assy.	1set	0165 0307 00 99
	(a) Lower Plate	1	0165 0307 00 00
	(b) Ball Bearing (6900CM)	1	9102 1001 00 00
	(c) Pin (2.5x6)	1	8055 1063 00 00
9	Lower Plate Spacer	1	0136 0311 00 00
10	Motor Case Cover Assy.	1set	0164 0001 00 99
	(a) Motor Case Cover	1	0164 0001 00 00
	(b) Spring (18.5x11)	1	8020 1287 00 00
	(c) Spring (18.5x13)	1	8020 1335 00 00

No.	Name of Parts	Per Set	Parts No.
	Control Valve Assy.	1set	0164 0241 00 99
	(d) Control Valve	1	0164 0241 00 00
	(e) O - Ring (P16)	1	9010 1015 00 00
	(f) Control Plate	1	0164 0226 00 00
*	(g) ST-Packing (22.2x24.3x0.1)	1	8011 1077 00 00
*	(h) ST-Packing (22.2x24.3x0.2)	1	8011 1078 00 00
	Control Bushing Assy.	1set	0164 0236 00 99
	(i) Control Bushing	1	0164 0236 00 00
	(j) O - Ring (N10)	1	9010 4004 00 00
	(k) Ball (3.5mm)	3	9150 1004 00 00
	Control Shaft Assy.	1set	0164 0234 00 99
	(m) O - Ring (N3)	1	9010 4025 00 00
	(n) Spring (5x10)	1	8020 1303 00 00
	(o) Adjust Bolt	1	0164 0522 00 00
11	Cover	1	0235 0708 00 00
12	Hexagon Button Bolt (M4x6)	1	8071 1004 00 00
13	S - Packing(A)	1	0164 0003 00 01
14	Hexagon Socket Bolt (M4x12)	4	8070 3059 00 00
15	Spring Washer (M4)	4	9200 3004 00 00
16	Rod	1	0164 1388 00 00

IMPULSE WRENCH

MODEL (YES.No.)	TOOL No.
Y-T45 (O3)	0165 0000 0300
Y-T45A (O3)	0165 0000 0301
Y-T45B (O3)	0165 0000 0302
Y-T45E (O3)	0165 0000 0309

Exploded View of Motor Case



YOKOTA EUROPA BV

P.O. BOX 392 NL-1000 AJ AMSTERDAM PHONE 020-5318800 FAX 020-5318808
 e-mail: info@impulsetools.com http://www.impulsetools.com
 Hydrolics, Impulss, Wrenches, Impact Wrenches, Drill, Grinders, Saws, Drivers, Chippers, Sockets, Pumps

The part "*" can not be supplied individually. So please order it as a unit of assembly shown by arrow mark (↑)
 *marked parts may be not used, in some case.
 ☆marked parts; use one of them.



Parts for Liner Case

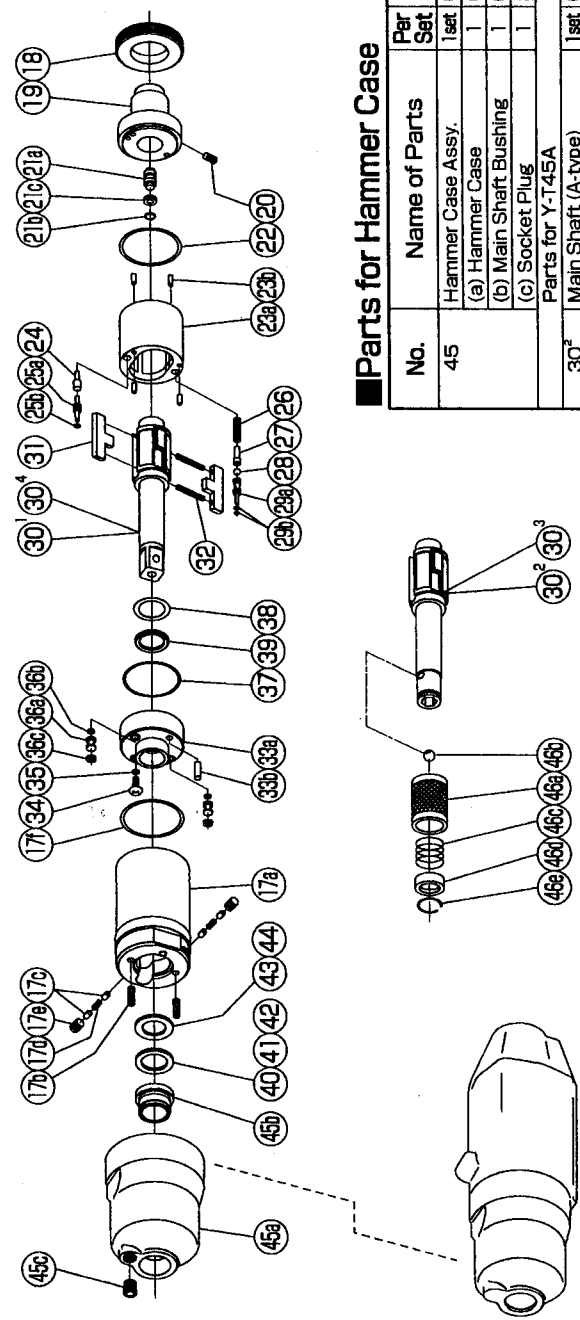
No.	Name of Parts	Per Set	Parts No.
17	Liner Case (A) Assy.	1set	0164 0422 00 98
	(a) Liner Case	1	*
	(b) Set Screw (M3x8)	2	9480 2024 00 00
	(c) Rubber Plate (3x5)	4	0259 0047 00 00
	(d) Spring (M4x4)	2	8020 1288 00 00
	(e) Set Screw (N30)	2	9480 2031 00 00
	(f) O - Ring	1	9010 4019 00 00
18	Liner Cap	1	0081 0423 01 00
19	Liner Upper Plate	1	0184 0424 00 00
20	Set Screw (M3x5)	1	9480 2001 00 00
21	Sensor Assy.	1set	0164 0794 00 99
	(a) Sensor	1	*
	(b) O - Ring (1.75x3x6.5)	1	9010 6027 00 00
	(c) Back-up Ring (3.2x6x1.5)	1	9090 2005 00 00
22	O - Ring (1.5x26.5x29.5)	1	9010 6023 00 00
23	Liner Assy.	1set	0164 0425 01 99
	(a) Liner	1	*
	(b) AA Pin (2x5 41--44HRC)	4	8052 3002 00 00
24	Relief Valve	1	0088 0245 00 00
25	Spring Guide (B) Assy.	1set	0088 0510 00 99
	(a) Spring Guide (B)	1	*
	(b) O - Ring (0.7x2x3.4)	1	9010 6020 00 00
26	Spring (3.4x8.5)	1	8020 1323 00 00
27	Spring Guide	1	0184 0510 01 00
28	Ball	1	9150 3001 00 00
29	Check Valve Assy.	1set	0185 0251 00 99
	(a) Check Valve	1	*
	(b) O - Ring (0.7x2x3.4)	2	9010 6020 00 00
30	Main Shaft	1	0159 0614 00 01
31	Blade	2	0088 0719 03 00
32	Spring (3.1x2.0)	2	8020 1296 00 00
33	Liner Lower Plate Assy.	1set	0164 0426 00 99
	(a) Liner Lower Plate	1	*
	(b) Spring Pin (3x8)	1	9250 2022 00 00
34	Oil Plug	1	0081 0010 01 00
35	O - Ring (N3)	1	9010 4025 00 00
36	Oil Stop Cap Assy.	2set	0081 0602 00 99
	(a) Oil Stop Cap	1	*
	(b) O - Ring (N2)	1	9010 4001 00 00
	(c) Back-up Ring (N2)	1	9090 2001 00 00
37	O - Ring (1x25.2x27.2)	1	9010 6012 00 00
38	O - Ring (P12)	1	9011 0001 00 00
39	Back-up Ring (12x16x1)	1	9090 5001 00 00
*40	Washer (12.5x18x0.3)	1	8041 5034 00 00
*41	Washer (12.5x18x0.5)	1	8041 5011 00 00
*42	Washer (12.5x18x1)	1	8041 5021 00 00
*43	ST-Packing (12.5x16x0.2)	1	8011 1011 00 00
*44	ST-Packing (12.5x16x0.3)	1	8011 1012 00 00

The part "*" can not be supplied individually.
 So please order it as a unit of assembly shown by arrow mark (↑).
 ☆marked parts; use one of them.

IMPULSE WRENCH

MODEL (YES.No.)	TOOL No.
Y-T45 (03)	0165 0000 0300
Y-T45A (03)	0165 0000 0301
Y-T45B (03)	0165 0000 0302
Y-T45E (03)	0165 0000 0309

Exploded View of Liner Case and Hammer Case



Parts for Hammer Case

No.	Name of Parts	Per Set	Parts No.
45	Hammer Case Assy.	1set	0259 0401 00 99
	(a) Hammer Case	1	0259 0401 00 00
	(b) Main Shaft Bushing	1	0259 0812 00 00
	(c) Socket Plug	1	8210 8001 00 00
	Parts for Y-T45A		
30	Main Shaft (A-type)	1set	0159 0614 00 51
	Parts for Y-T45B		
30	Main Shaft (B-type)	1set	0159 0614 00 52
46	Bit Chuck Assy.	1set	2057 0414 00 99
	(a) Bit Chuck	1	2057 0414 00 00
	(b) Ball (1/8)	1	9150 3009 00 00
	(c) Spring (13.5x10)	1	8020 1340 00 00
	(d) Spring Washer	1	2331 0419 00 00
	(e) Retaining Ring (10x1)	1	8030 1009 00 00
	Parts for Y-T45E		
30	Main Shaft Assy. (E-type)	1set	0159 0614 00 59
	Standard Accessories		
	Swivel Joint	1	9690 0015 00 00
	Hex. Wrench (H1.5x65x65)	1	9610 1012 00 00
	Hex. Wrench (H5/32)	1	9610 3008 00 00
	Protector	1	0164 0029 00 00

The part "*" can not be supplied individually.
 So please order it as a unit of assembly shown by arrow mark (↑).
 016503-P0302

YOKOTA EUROPA BV
 P.O. BOX 392 NL-1000 AJ AMSTERDAM PHONE 020-6318900 FAX 020-6318908
 e-mail: info@impulsetools.com http://www.impulsetools.com
 Hydraulic Impuls Wrenches, Impact Wrenches, Drill Grinders, Screw Drivers, Chipbars, Sealers, Pumps.