

Parts for Motor Case

No.	Name of Parts	Per Set	Parts No.
M	Motor Case Assy.	1set	0175 0011 00 99
M1	Motor Case Assy.(1)	1set	0175 0011 00 68
A1	Motor Case Assy.(2)	1set	0175 0011 00 68
	(a) Motor Case	1	*
	(b) Exhaust Bushing	1	0175 0072 00 00
	Hose Joint Assy.	1set	0334 0113 00 99
	(c) Hose Joint	1	0334 0113 00 00
	(d) Strainer	0259	0111 00 00
	(e) Washer (7.5x11x2)	1	8042 2008 00 00
	(f) Exhaust Cover	1	0334 0016 00 00
	(g) Silencer Sheet	1	0334 0032 00 00
	(h) O - Ring (N12)	1	9010 4005 00 00
	(i) O - Ring (N16)	1	9010 4009 00 00
	(j) O - Ring (N22)	1	9010 4011 00 00
	(k) Spring Pin (5x10)	1	9250 1082 00 00
	3 Stage Throttle Assy.	1set	0334 0186 00 99
	(l) Throttle Bushing	1	0334 0104 00 00
	(m) O - Ring (N18)	1	9010 4023 00 00
	Throttle Rod Bushing Assy.	1set	0334 0105 00 99
	(n) Throttle Rod Bushing	1	*
	(o) O - Ring (P8)	1	9010 1048 00 00
	Throttle Rod Assy.	1set	0334 0106 00 99
	(p) Throttle Rod	1	*
	(q) O - Ring (N4)	1	9010 4058 00 00
	(r) Snap Ring (ETW-2.8)	1	9040 5008 00 00
	(s) Reverse Valve	1	0334 0005 00 00
	(t) O - Ring (N15)	1	9010 4008 00 00
	(u) Spring (3x4)	1	8020 1246 00 00
	(v) Ball (1/8)	1	9150 3009 00 00
	(w) Reverse Lever	1	0334 0007 00 00
	(x) Spring Pin (2x12)	1	9250 1015 00 00
	(y) Throttle Knob	1	0158 0153 00 00
	(z) Spring Pin (1.5x14)	1	9250 1005 00 00
	(a1) Pin (2.5x22)	1	8055 1082 00 00
	(b1) O - Ring (N40)	2	9010 4017 00 00
A2	Motor Assy.	1set	0175 0305 00 99
	Upper Plate Assy.	1set	0175 0303 00 99
	(a) Upper Plate	1	0175 0303 00 00
	(b) Ball Bearing (608MC2)	1	9102 3006 00 00
	(c) Pin (2x5)	1	8051 1037 00 00
	Cylinder Assy.	1set	0175 0304 00 99
	(d) Cylinder	1	*
	(e) Pin (2.5x6)	1	8055 1053 00 00
	(f) Rotar	1	0175 0305 00 00
	(g) Vane	9	0158 0306 01 00
	Lower Plate Assy.	1set	0175 0307 00 99
	(h) Lower Plate	1	0175 0307 00 00
	(i) Ball Bearing (6902CM)	1	9102 1004 00 00
A3	S - Packing (A)	1	0175 0009 00 01
A4	Motor Case Cover Assy.	1set	0175 0001 00 99
	(a) Motor Case Cover	1	0175 0001 00 00
	(b) Spring Pin (5x10)	1	9250 1082 00 00

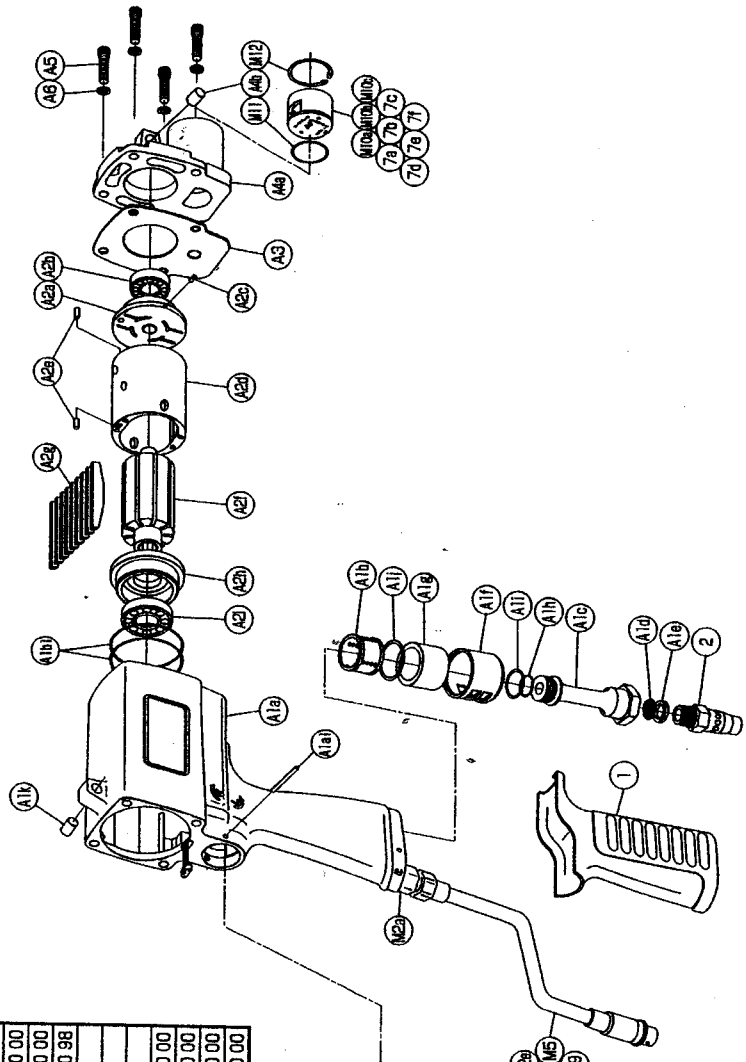
The part "*" can not be supplied individually. So please order it as a unit of assembly shown by arrow mark (↑).



With built - in torque sensor 2 BLADE SYSTEM WRENCH

MODEL (YES.No.)	TOOL No.
YED-70 (00)	0175 0000 0000
YED-70-C (00)	0175 0000 0003
YED-70-D (00)	0175 0000 0006

Exploded View of Motor Case



YOKOTA EUROPA BV

P.O. BOX 392 NL-1000 AJ AMSTERDAM · PHONE 020-5318800 FAX 020-5318806
Hydraulic Impact Wrenches, Impact Wrenches, Drills, Grinders, Screw Drivers, Chippers, Sealers, Pumps.

Parts for Liner Case

No.	Name of Parts	Per Set	Parts No.
L	Liner Case Assy.	1set	0175 0422 00 99
	(a) Liner Case	1	0175 0422 00 00
	(b) O - Ring (N35)	1	9010 4048 00 00
	(c) Liner Cap	1	0175 0423 00 00
	(d) Liner Upper Plate	1	0175 0424 00 00
	(e) O - Ring (N32)	1	9010 4014 00 00
	Liner Assy.	1set	0175 0425 00 99
	(f) Liner	1	*
	(g) AA Pin (3x5)	4	8051 3094 00 00
	(h) Relief Valve	1	0175 0245 00 00
	(i) Pin (2x1.8)	1	8051 1306 00 00
	(j) Liner Shaft	1	0175 0796 00 00
	(k) Blade	2	0175 0719 00 00
	(l) Spring (3.6x28.5)	2	8020 1336 00 00
	Liner Lower Plate Assy.	1set	0175 0426 00 99
	(m) Liner Lower Plate	1	*
	(n) Spring Pin (3x6)	1	9250 2001 00 00
	Adjust Rod Assy.	1set	0175 0427 00 99
	(o) Adjust Rod	1	*
	(p) O - Ring (N2)	1	*
	(q) Back-up Ring (N2)	1	*
	(r) O - Ring (R-LEP16)	1	9011 5001 00 00
	(s) Back-up Ring (16x18.8x1.5)	1	9090 1018 00 00
	(t) Oil Plug (3x6)	1	0081 0010 01 00
	(u) O - Ring (N3)	1	9010 4025 00 00
3	Washer (1.6x23x1)	1	8041 5040 00 00

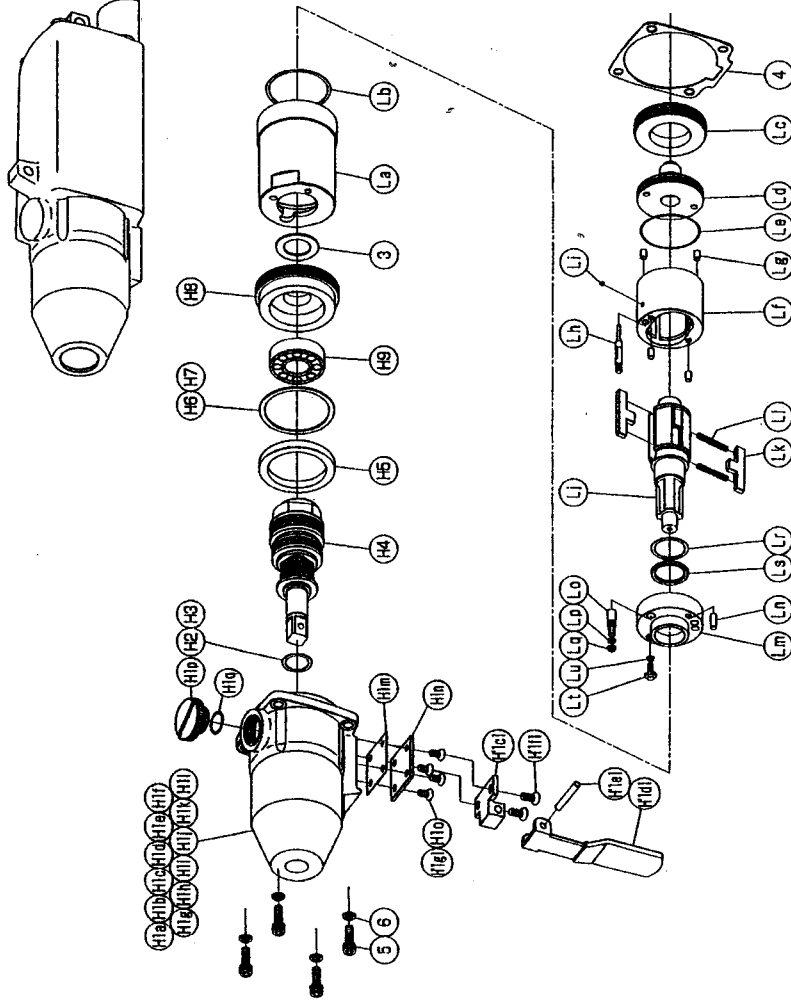
Parts for Hammer Case

No.	Name of Parts	Per Set	Parts No.
H	Hammer Case Assy.	1set	0175 0401 00 99
H1	Hammer Case (1) Assy.	1set	0175 0401 00 69
	(a) Hammer Case	1	*
	(b) Core (A) Assy.	1set	*
	(c) Core (B)	1	*
	(d) Spacer (A)	1	*
	(e) Core (C)	1	*
	(f) Core (D) Assy.	1set	*
	(g) Ball Bearing (6901ZZ)	1	9100 5026 00 00
	(h) Hexagon Socket Set Screw (M4x9)	1	9480 1006 00 00
	(i) Shrinkage Tube (φ2x30)	2	9380 5030 00 00
	(j) Shrinkage Tube (φ1.5x9)	4	9380 5010 00 00
	(k) Micro Connector (OX-202)	4	8600 4001 00 00
	(l) Isolation Sheet	1	0175 1525 00 00
	(m) S - Packing (C)	1	0175 0003 00 03
	(n) Cover Plate	1	0175 0014 00 00
	(o) Hex. Flat Bolt (M3x6)	4	8071 4007 00 00
	(p) Regulator Cap	1	0143 0204 00 00
	(q) O - Ring (N12)	1	9010 4005 00 00

With built-in torque sensor 2 BLADE-SYSTEM WRENCH

MODEL (YES.No.)	TOOL No.
YED-70 (00)	0175 0000 0000
YED-70-C (00)	0175 0000 0003
YED-70-D (00)	0175 0000 0006

Exploded View of Liner Case and Hammer Case



No.	Name of Parts	Per Set	Parts No.
*H2	ST-Packing (12.5x16x0.1)	1	8011 1084 00 00
*H3	ST-Packing (12.5x16x0.2)	1	8011 1011 00 00
H4	Main Shaft Assy.	1set	0175 0614 00 99
H5	Spacer (C)	1	0146 0119 00 03
*H6	C-Packing (35x40.5x0.1)	1	8010 1291 00 00
*H7	C-Packing (35x40.5x0.2)	1	8010 1292 00 00
H8	Bearing Case	1	0127 0650 00 00
H9	Ball Bearing (6903ZZ)	1	9100 5025 00 00
4	S-Packing (B)	1	0175 0003 00 02
5	Hexagon Socket Head Cap Screw(M4x18)	1	8070 3052 00 00
6	Spring Washer (M5)	1	8020 3005 00 00

Special Parts for Lamp-version

M*	Motor Case Assy.	1set	0175 0011 00 98
7	Lamp Assy.	1set	0146 0959 00 99
	(a) Lamp Holder	1	*
	(b) LED (TLRH156P)	2	*
	(c) LED (TLGD135AP)	2	*
	(d) Print Basic (C)	1	*
	(e) Resistance (920Ω 1/4W)	1	*
	(f) Micro Connector (PM-10)	1	*

Special Parts for D-version

M*	Motor Case Assy.	1set	0175 0011 00 97
M*1	Motor Case (1) Assy.	1set	0175 0011 00 67
A*1	Motor Case (2) Assy.	1set	0175 0011 00 66
	3 Stage Throttle Assy.	1set	0175 0186 00 99
	(y) Throttle Knob	1	0175 0163 00 00
	(z) Spring Pin (1.5x12)	1	9250 1004 00 00
H*	Hammer Case Assy.	1set	0175 0401 00 98
H*1	Hammer Case (1) Assy.	1set	0175 0401 00 68
	(G1) Bracket	1	0175 0023 00 00
	(d1) Throttle Lever	1	0168 0110 00 00
	(e1) Spring Pin (3x18)	1	9250 2016 00 00
	(f1) Hex. Flat Bolt (M3x8)	2	8071 4003 00 00
	(g1) Hex. Flat Bolt (M3x6)	2	8071 4007 00 00

Standard Accessories

	Spanner (H3,H7)	1	8081 7001 00 00
	Protector	1	0175 0029 00 00

The part "*" can not be supplied individually.

So please order it as a unit of assembly shown by arrow mark (†).

* marked parts may be not used, in some case.



YOKOTA EUROPA BV

P.O. BOX 392 NL-1000 A-J AMSTERDAM PHONE 020-5318600 FAX 020-5318608

Hydraulic, Impact Wrenches, Impact Wrenches, Drills, Grinders, Saw Drivers, Chippers, Sealers, Pumps