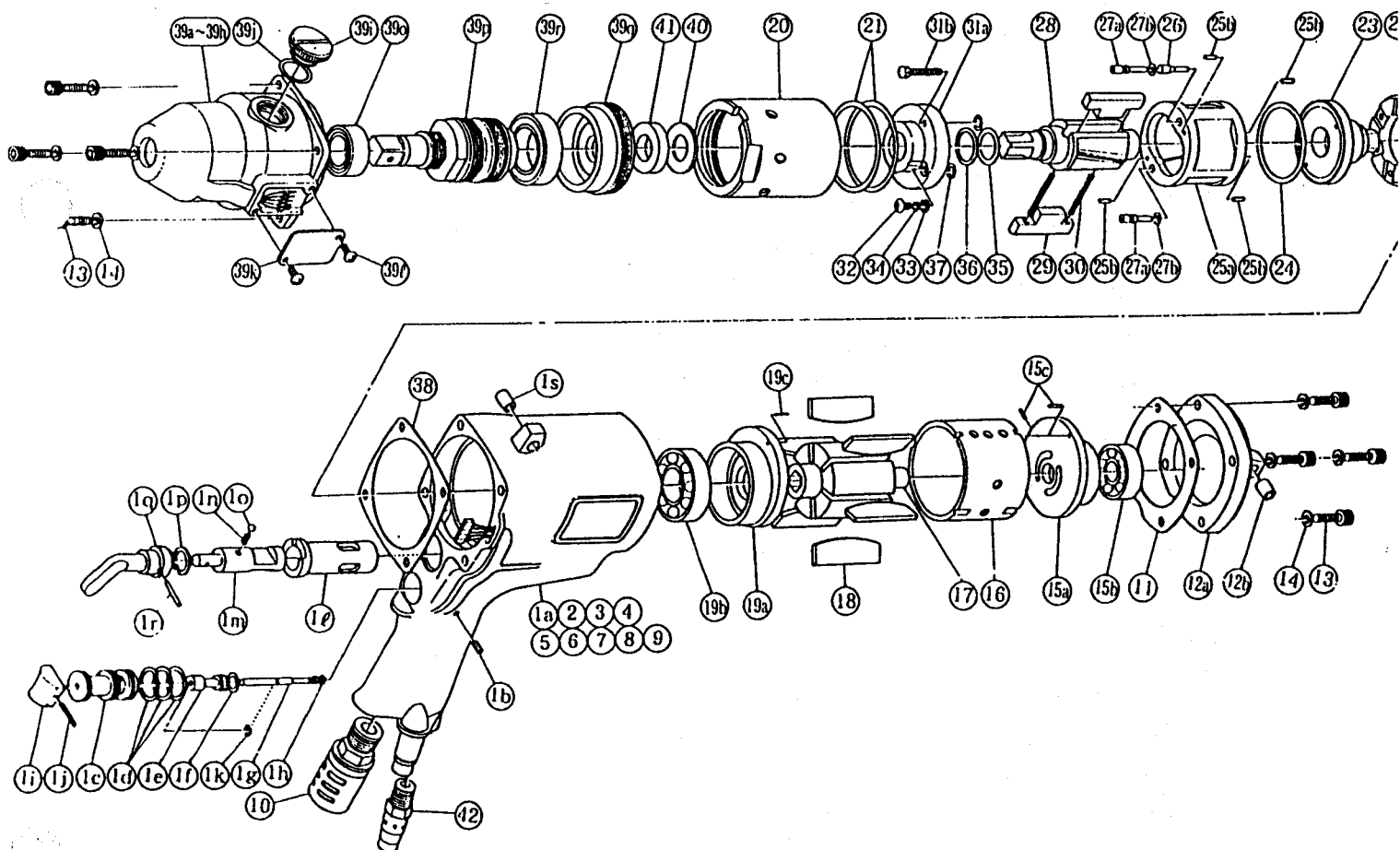


YOKOTA

With built-in torque sensor 2 BLADE • SYSTEM WRENCHES

MODELS (YES. NO.)	TOOL NO.
YEX-1400(00)	0323 0000 00 00

EXPLODED VIEW



No.	Name of Parts	Per Set	Parts No.
1	Motor Case Assy.	1set	0323 0011 00 99
	(a) Motor Case	1	0323 0011 00 00
	(b) Screw (M5 × 8)	1	9480 1010 00 00
	Throttle Bushing Assy.	1set	0229 0104 00 99
	(c) Throttle Bushing	1	※ ↑
	(d) "O" Ring (N15)	3	9010 4008 00 00
	Throttle Rod Bushing Assy.	1set	0229 0105 00 99
	(e) Throttle Rod Bushing	1	※ ↑
	(f) "O" Ring (No.5)	1	9010 3004 00 00
	Throttle Rod Assy.	1set	0229 0106 00 99
	(g) Throttle Rod	1	※ ↑
	(h) "O" Ring (N2)	1	9010 4001 00 00

No.	Name of Parts	Per Set	Parts No.
	(i) Throttle Knob	1	2024 0153 00 00
	(j) Spring Roll Pin (1.5 × 14)	1	9250 1005 00 00
	(k) Snap Ring (ETW - 2.8)	1	9040 5008 00 00
	(l) Reverse Bushing	1	0229 0004 00 00
	(m) Reverse Valve	1	0323 0005 00 00
	(n) Spring (4 × 6)	1	8020 1022 00 00
	(o) Ball (M4)	1	9150 1005 00 00
	(p) Snap Ring (IRTW - 14)	1	9040 3004 00 00
	(q) Reverse Lever	1	0048 0007 01 00
	(r) Spring Roll Pin (3 × 14)	1	9250 1049 00 00
	(s) Spring Roll Pin (8 × 10)	1	9250 2017 00 00
2	Buzzer Base Assy.	1	0234 0798 00 98



YOKOTA EUROPA BV

DE RUYTERKADE 142, AMSTERDAM PHONE (020) 25 29 53 TELEXNR ; 14022

■ PARTS LIST

No.	Name of Parts	Per Set	Parts No.	No.	Name of Parts	Per Set	Parts No.
3	"O" Ring (P20)	1	9010 1017 00 00	31	Liner Lower Plate(A) Assy.	1set	0323 0426 01 98
4	Snap Ring (RTW-24)	1	9040 1014 00 00		(a) Liner Lower Plate	1	0322 0426 01 00
5	Hose Joint	1	3013 0113 00 00		(b) Adjust Bolt	1	0238 0522 00 00
6	Holder	1	★	32	Oil Plug (M4)	1	0048 0010 00 00
7	Connector	1	★	33	Washer (6.5 × 8.5 × 1.1)	1	8040 1073 00 00
8	Cord	1	★	34	"O" Ring (N4)	1	9010 4021 00 00
9	Micro Connector	5	★	35	"O" Ring (2.55 × 17.8 × 22.9)	1	9010 6017 00 00
10	Silencer Assy.	1set	0405 0053 01 99	36	Backup Ring	1	9090 1006 00 00
11	S-Packing (A)	1	0323 0003 00 01	37	"O" Ring (N5)	2	9010 4033 00 00
12	Motor Case Cover Assy.	1set	0323 0001 00 99	38	S-Packing (B)	1	0323 0003 00 02
	(a) Motor Case Cover	1	※ ↑	39	Hammer Case Assy.	1set	0323 0401 00 99
	(b) Spring Roll Pin (8 × 10)	1	9250 2017 00 00		(a) Hammer Case	1	※ ↑
13	Hex.Socket Bolt (M5 × 18)	8	8070 3052 00 00		(b) Core (A)	1	※ ↑
14	Spring Washer (M5)	8	9200 3005 00 00		(c) Core (B)	1	※ ↑
15	Upper Plate Assy.	1set	0941 0303 00 99		(d) Spacer (A)	1	※ ↑
	(a) Upper Plate	1	0941 0303 00 00		(e) Core (C)	1	※ ↑
	(b) Ball Bearing (# 6201)	1	9100 1021 00 00		(f) Core (D)	1	※ ↑
	(c) Spring Roll Pin (2 × 6)	2	9250 1011 00 00		(g) Screw (M4 × 5)	1	※ ↑
16	Cylinder	1	★		(h) Micro Connector	5	※ ↑
17	Rotor	1	0322 0305 00 00		(o) Ball Bearing (# 6903ZZ)	1	※ ↑
18	Vane	6	0322 0306 00 00		(p) Main Shaft Assy.	1set	※ ↑
19	Lower Plate Assy.	1set	★		(q) Bearing Case	1	※ ↑
	(a) Lower Plate	1	★		(r) Ball Bearing (# 6905ZZ)	1	※ ↑
	(b) Ball Bearing (# 6004)	1	★		(i) Regulator Cap	1	0323 0204 00 00
	(c) Spring Roll Pin(2×6)	1	★		(j) "O" Ring (N16)	1	9010 4009 00 00
20	Liner Case	1	0323 0422 00 00		(k) Cover Plate	1	0323 0014 00 00
21	"O" Ring (N50)	2	9010 4042 00 00		(l) Screw (M4 × 8 × 0.7)	2	9410 2004 00 00
22	Liner Cap	1	0322 0423 00 00	40	Washer (16 × 29 × 1.0)	1	8042 1002 00 00
23	Liner Upper Plate	1	0322 0424 00 00	41	Washer (16.5 × 30 × 4.8)	1	8041 5009 00 00
24	"O" Ring (N44)	1	9010 4020 00 00	Standard Equipment			
25	Liner Assy.	1set	0322 0425 00 99	42	Touch Joint (1/4)	1	9690 0007 00 00
	(a) Liner	1	※ ↑		Pin (φ 1.5 × 68)	1	8051 1029 00 00
	(b) Pin (3 × 7)	4	8052 1019 00 00				
26	Relief Valve	1	0322 0245 00 00				
27	Spring Guide(B) Assy.	2set	0322 0510 00 99				
	(a) Spring Guide(B)	1	※ ↑				
	(b)"O" Ring (N3)	1	9010 4025 00 00				
28	Liner Shaft	1	0323 0796 00 00				
29	Blade	2	0322 0719 01 00				
30	Spring (4.1 × 36)	2	8020 1257 00 00				

The part marked "※" can not be supplied individually. So please order it as a unit of assembly shown by arrow mark (↑).
The part marked "★" can not be supplied individually. So please order it as a unit of motor case assembly.