

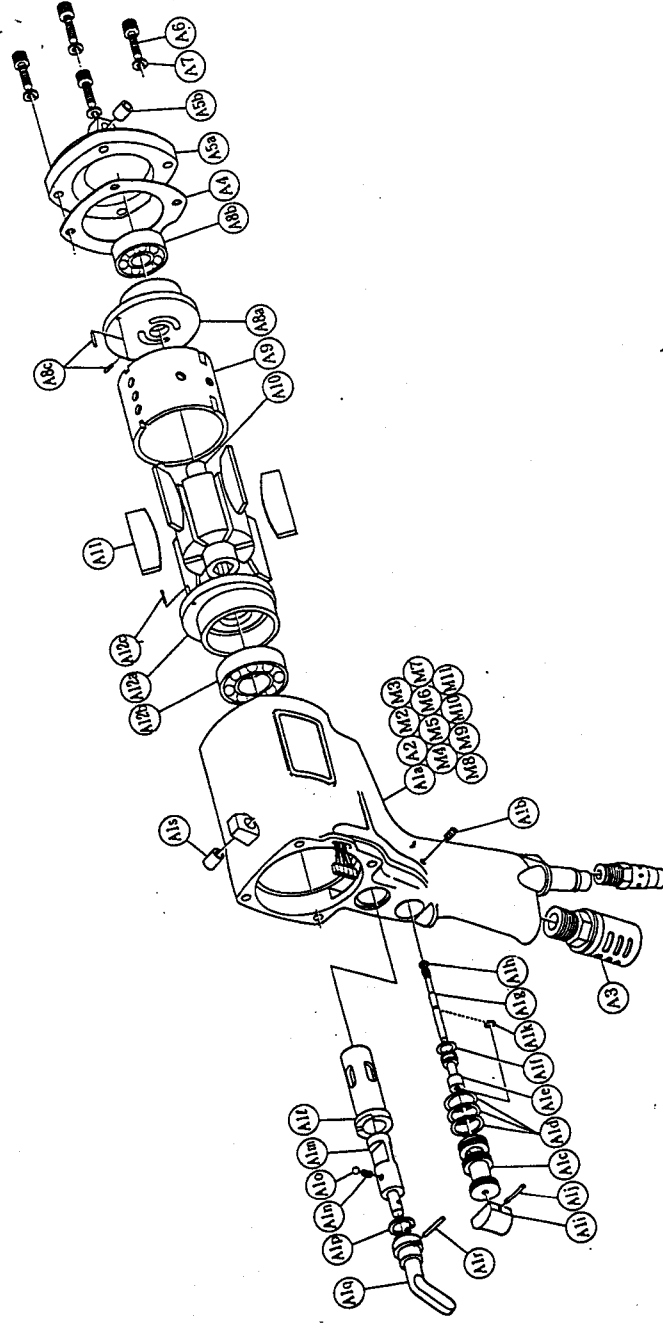
## With built-in torque sensor 2 BLADE SYSTEM WRENCH

MODEL (YES. NO.)	TOOL NO.
YEX-1400 (02)	0323 0000 02 00

■ Exploded View of Motor Case

### Parts for Motor Case

No.	Motor Case Assy.	Per Set	Parts No.
M	Motor Case Assy.	1 set	0323 0011 00 99
M1	Motor Case (A) Assy.	1 set	0323 0011 00 98
M1	Motor Case (B) Assy.	1 set	0323 0011 00 97
A1	Motor Case	1	0323 0011 00 00
	(a) Screw (M5 x 8 x 0.8)	1	9490 1010 00 00
	Throttle Bushing Assy.	1 set	0229 0104 00 99
	(c) Throttle Bushing	1	*
	(d) "O" Ring (N15)	3	9010 4008 00 00
	Throttle Rod Bushing Assy.	1 set	0323 0105 00 99
	(e) Throttle Rod Bushing	1	*
	(f) "O" Ring (No.5)	1	9010 3022 00 00
	Throttle Rod Assy.	1 set	0229 0106 00 99
	(g) Throttle Rod	1	*
	(h) "O" Ring (N2)	1	9010 4001 00 00
	(i) Throttle Knob	1	2024 0153 00 00
	(j) Spring Roll Pin (1.5 x 14)	1	9250 1005 00 00
	(k) Snap Ring (ETW-2.8)	1	9040 5008 00 00
	(l) Reverse Bushing	1	0229 0004 00 00
	(m) Reverse Valve	1	0323 0005 00 00
	(n) Spring (4 x 6)	1	8020 1022 00 00
	(o) Ball (M4)	1	9150 1005 00 00
	(p) Snap Ring (IRTW-14)	1	9040 3004 00 00
	(q) Reverse Lever	1	0048 0007 01 00
	(r) Spring Roll Pin (3 x 14)	1	9250 1049 00 00
	(s) Spring Roll Pin (3 x 10)	1	9250 2017 00 00
A2	Hose Joint	1	0078 0113 00 00
A3	Silencer Assy.	1 set	0405 0053 01 99
A4	S - Tacking (A)	1	0323 0003 00 01
A5	Motor Case Cover Assy.	1 set	0323 0001 00 99
	(a) Motor Case Cover	1	*
	(b) Spring Roll Pin (8 x 10)	1	9250 2017 00 00
A6	Hex. Socket Bolt (06 x 18 x 0.8)	4	8070 3052 00 00
A7	Spring Washer (M5)	4	9200 3005 00 00
A8	Upper Plate Assy.	1 set	0941 0303 01 99
	(a) Upper Plate	1	0941 0303 01 00
	(b) Ball Bearing (# 6201)	1	9100 1021 00 00
A9	Cylinder	2	9250 1011 00 00
A10	Rotor	1	0322 0304 00 00
A11	Vane	6	0322 0306 00 00
A12	Lower Plate Assy.	1 set	0941 0307 01 99
	(a) Lower Plate	1	0941 0307 01 00
	(b) Ball Bearing (# 6004)	1	9100 1019 00 00
	(c) Spring Roll Pin (2 x 6)	1	9250 1011 00 00
M2	Holder Assy.	1 set	0127 0717 00 99
M3	Tube (φ 3 x 2 1/2)	1	9380 5007 00 00
M4	Empire Tube (φ 1.0 x 1/2)	1	9380 8001 00 00
M5	Tube (φ 1.5 x 1/2)	5	9380 5008 00 00

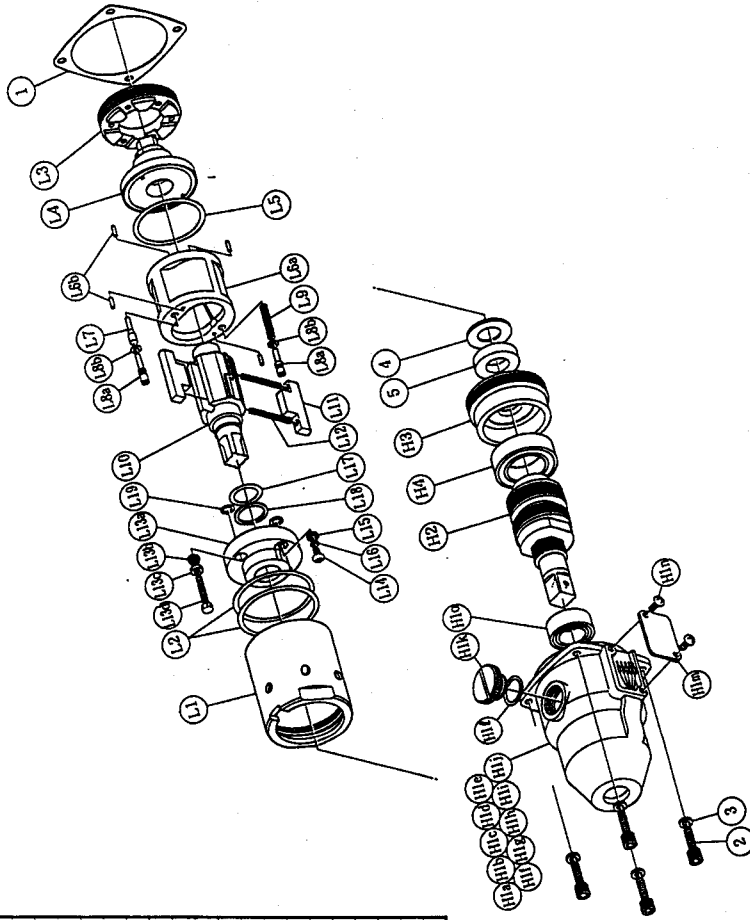


The part "\*" can not be supplied individually. So please order it as a unit of assembly shown by arrow mark (↑).

With built-in torque sensor  
**2 BLADE • SYSTEM WRENCH**

MODEL (YES. NO.)	TOOL NO.
YEX-1400 (0.2)	0323 0000 02 00

■ Exploded View of Liner Case and Hammer Case



■ Parts for Liner Case

No.	Name of Parts	Per Set	Parts No.
L	Liner Case Assy.	1set	0323 0422 02 99
L1	Liner Case	1	0323 0422 00 00
L2	"O" Ring (N50)	2	9010 4042 00 00
L3	Liner Cap	1	0322 0423 00 00
L4	Liner Upper Plate	1	0322 0424 00 00
L5	"O" Ring (M44)	1	9010 4020 00 00
L6	Liner Assy.	1set	0322 0425 01 99
	(a) Liner	1	* ↑
	(b) AA Pin (3 x 7)	4	8051 3093 00 00
L7	Relief Valve	1	0322 0245 00 00
L8	Spring Guide (B) Assy.	2set	0322 0510 00 99
	(a) Spring Guide (B)	1	* ↑
	(b) "O" Ring (N3)	1	9010 4025 00 00
L9	Spring (4.1 x 36)	1	8020 1257 00 00
L10	Liner Shaft	1	0323 0796 02 00
L11	Blade	2	0322 0719 01 00
L12	Spring (4.1 x 36)	2	8020 1257 00 00
L13	Liner Lower Plate (A) Assy.	1set	0323 0426 03 98
	(a) Liner Lower Plate	1	* ↑
	(b) Nylon Bushing	1	0237 0431 01 00
	(c) Washer (5.9 x 7.6 x 2.8)	1	8040 1137 00 00
	(d) Adjust Bolt	1	0238 0522 01 00
L14	Oil Plug (M4)	1	0048 0010 00 00
L15	Washer (6.5 x 6.5 x 1.1)	1	8040 1073 00 00
L16	"O" Ring (M4)	1	9010 4021 00 00
L17	"O" Ring (2.55 x 17.8 x 22.8)	1	9010 6017 00 00
L18	Backup Ring (18 x 22.4 x 0.6)	1	9090 1006 00 00
L19	"O" Ring (N5)	2	9010 4033 00 00
	S-Packing (B)	1	0323 0003 00 02

■ Parts for Hammer Case

No.	Name of Parts	Per Set	Parts No.
H	Hammer Case Assy.	1set	0323 0401 01 99
H1	Hammer Case (A) Assy.	1set	0323 0401 00 98
	(a) Hammer Case	1	* ↑
	(b) Core (A) Assy.	1	* ↑
	(c) Core (B)	1	* ↑
	(d) Spacer (A)	1	* ↑
	(e) Core (C)	1	* ↑
	(f) Core (D) Assy.	1set	* ↑
	(g) Screw (M4 x 6 x 0.7)	1	* ↑
	(h) Tube (φ 1.5 x φ 9)	5	* ↑
	(i) Tube (φ 2.0 x φ 9)	5	* ↑
	(j) Micro Connector (OM-1)	5	* ↑
	(k) Regulator Cap	1	0323 0204 00 00
	(l) "O" Ring (N16)	1	9010 4009 00 00
	(m) Cover Plate	1	0323 0014 00 00
	(n) Screw (M4 x 8 x 0.7)	2	9410 2004 00 00
H2	Ball Bearing (# 6903ZZ)	1	9100 5025 00 00
H3	Main Shaft Assy.	1set	0321 0614 01 99
H4	Bearing Case	1	0321 0650 00 00
	Ball Bearing (# 6905ZZ)	1	9100 5013 00 00
2	Hex Socket Bolt (M5 x 18 x 0.8)	4	8070 3052 00 00
3	Spring Washer (M6)	4	9200 3005 00 00
4	Washer (18 x 29 x 1.0)	1	8042 1009 00 00
5	Washer (18.5 x 30 x 4.8)	1	8041 5015 00 00
	Standard Accessories		
	Touch Joint (Y)	1	9690 0007 00 00
	TF Pin (φ 2.0 x 90)	1	8051 6001 00 00

The part "\*" can not be supplied individually.  
So please order it as a unit of assembly  
shown by arrow mark (↑).

**YOKOTA EUROPA BV**  
P.O. BOX 392 NL - 1000 AJ AMSTERDAM PHONE 020 - 625 29 53 FAX 020 - 625 35 69  
Hydraulic Impulse Wrenches, Impact Wrenches, Drills, Grinders, Screwdrivers, Chippers, Sclaters, Pumps.