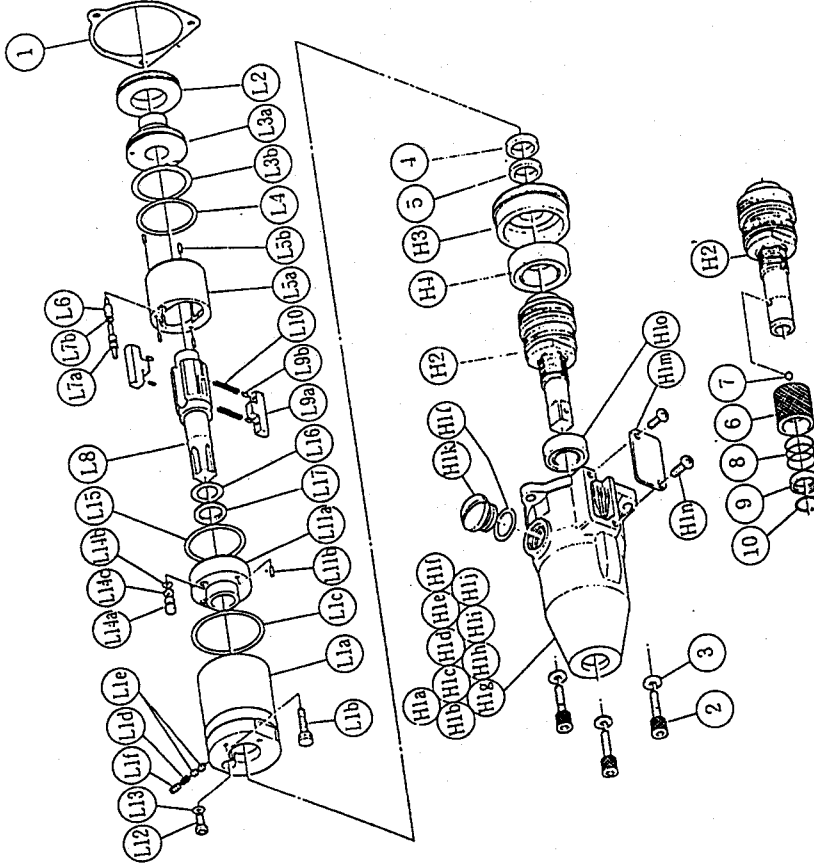


With built-in torque sensor
2 BLADE • SYSTEM WRENCHES

MODELS (YES. NO.)	TOOL NO.
YEX-150 (00)	0093 0000 00 00
YEX-150A (00)	0093 0000 00 01

Exploded View of Liner Case and Hammer Case



Parts for Liner Case

No.	Name of Parts	Per Set	Parts No.
L	Liner Case Assy.	1set	0083 0422 01 99
L1	Liner Case (A) Assy.	1set	0083 0422 01 98
	(a) Liner Case	1	*
	(b) Adjust Bolt	1	0093 0522 00 00
	(c) O'Ring (N30)	1	9010 4019 00 00
	(d) Spring (2.4 x 6)	1	8020 1267 00 00
	(e) Rubber Plate	2	0081 0047 00 00
	(f) Screw (M3 x 3)	1	9480 2028 00 00
L2	Liner Cap	1	0081 0423 01 00
L3	Liner Upper Plate Assy.	1	0081 0424 01 99
	(a) Liner Upper Plate	1	*
	(b) O'Ring (N25)	1	9010 4027 00 00
L4	O'Ring (1.5 x 26.5 x 29.5)	1	9010 6023 00 00
L5	Liner Assy.	1set	0088 0425 01 99
	(a) Liner	1	*
	(b) AA Pin (2 x 5)	4	8051 3081 00 00
	Relief Valve	1	0088 0245 00 00
L6	Spring Guide (B)	1set	0088 0510 00 99
	(a) Spring Guide (B)	1	*
	(b) O'Ring (0.7 x 2 x 3.4)	1	9010 6020 00 00
L8	Liner Shaft	1	0079 0796 01 00
L9	Blade Assy.	2set	0088 0719 01 99
	(a) Blade	1	*
	(b) Pin E (2 x 4.7)	2	8410 4091 00 00
L10	Spring (3.3 x 20.5)	2	8020 1244 00 00
L11	Liner Lower Plate Assy.	1set	0081 0426 01 99
	(a) Liner Lower Plate	1	*
	(b) Spring Roll Pin (3 x 8)	1	9250 2022 00 00
L12	Oil Plug	1	0081 0010 00 00
L13	O'Ring (N3)	1	9010 4025 00 00
L14	Oil Stop Cap Assy.	1set	0081 0602 00 99
	(a) Oil Stop Cap	1	*
	(b) O'Ring (N2)	1	9010 4001 00 00
	(c) Backup Ring (N2)	1	9090 2001 00 00
L15	O'Ring (1 x 25.2 x 27.2)	1	9010 6012 00 00
L16	O'Ring (2.3 x 11.8 x 16.4)	1	9010 6019 00 00
L17	Backup Ring (12 x 16 x 0.8)	1	9090 1010 00 00
	S - Packing	1	0093 0003 00 00

Parts for Hammer Case

No.	Name of Parts	Per Set	Parts No.
H	Hammer Case Assy.	1set	0093 0401 00 99
H1	Hammer Case (A) Assy.	1set	0093 0401 00 98
	(a) Hammer Case	1	*
	(b) Core (A) Assy.	1set	*
	(c) Core (B)	1	*
	(d) Spacer (A)	1	*
	(e) Core (C)	1	*
	(f) Core (D) Assy.	1	*
	(g) Screw (M4 x 5 x 0.7)	1	*
	(h) Micro Connector (OM - 1)	5	*
	(i) Tube (φ 1.5 x 4.9)	5	*
	(j) Tube (φ 2.0 x 4.9)	5	*
	(k) Regulator Cap	1	0093 0204 00 00
	(l) O'Ring (N10)	1	9010 4004 00 00
	(m) Cover Plate	1	0093 0014 00 00
	(n) Screw (M4 x 4)	2	9410 2004 00 00
	(o) Ball Bearing (# 6801/2Z)	1	9100 5028 00 00
H2	Main Shaft Assy.	1set	0093 0614 00 99
H3	Bearing Case	1	0093 0650 00 00
H4	Ball Bearing (# 6803/2Z)	1	9100 5025 00 00
2	Hex. Socket Bolt (M4 x 14)	3	8070 3008 00 00
3	Spring Washer (M4)	3	9200 3004 00 00
4	Washer (12.5 x 16 x 3)	1	8040 5008 00 00
5	Washer (12.5 x 16 x 3.5)	1	8041 5012 00 00
	YEX - 150A		
H1	Hammer Case Assy.(A type)	1set	0093 0401 00 89
H2	Main Shaft Assy.(A type)	1set	0093 0614 00 89
6	Ball Chuck	1	2057 0414 00 00
7	Ball 1/8	1	9150 3009 00 00
8	Spring (13.5 x 11.2)	1	8020 1137 00 00
9	Spring Washer	1	2057 0419 00 00
10	Retaining Ring (10 x 1)	1	8030 1009 00 00
	Standard Accessories		
	Touch Joint (1/4)	1	9690 0007 00 00
	TF Pin (φ 2.0 x 90)	1	8051 6001 00 00

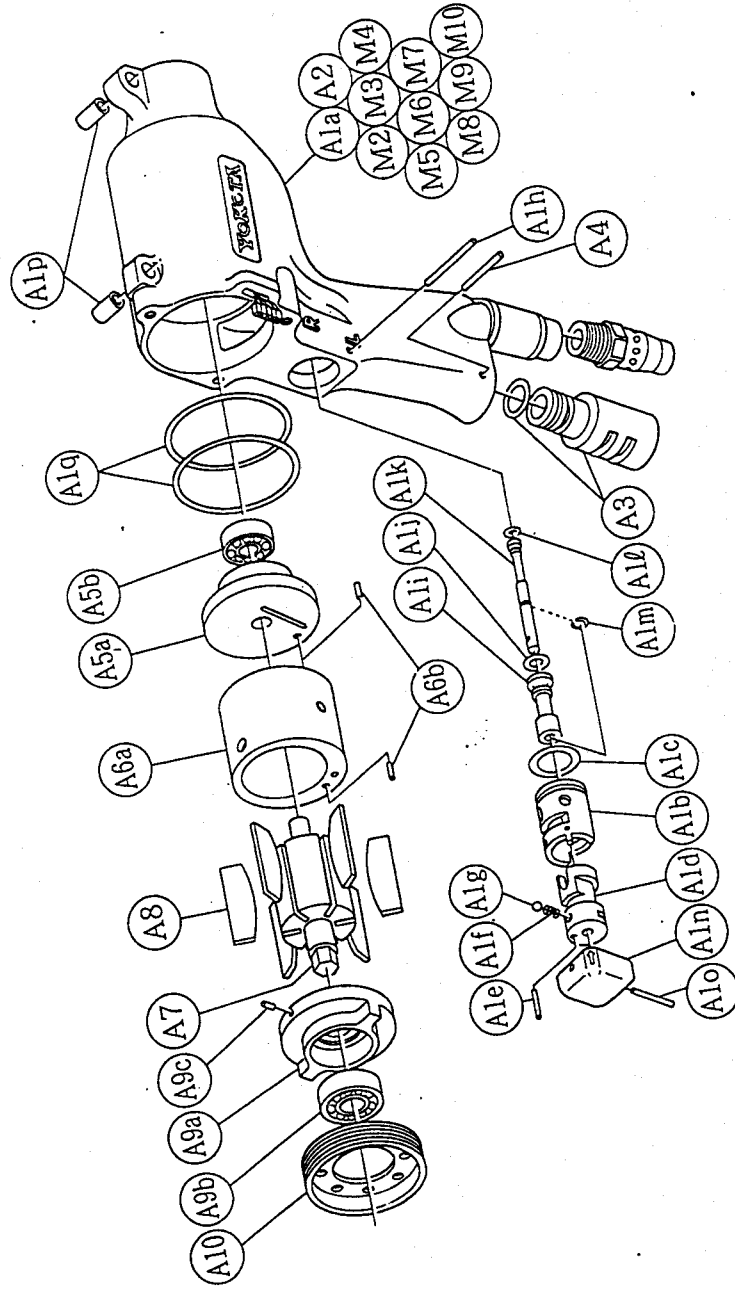
The part "*" can not be supplied individually.
So please order it as a unit of assembly
shown by arrow mark (↑).

YOKOTA EUROPA BV
P.O. BOX 392 HL - 1000 AJ AMSTERDAM PHONE 020 - 625 29 53 FAX 020 - 625 35 69
Hydraulic Impulse Wrenches, Impact Wrenches, Drills, Grinders, Screwdrivers, Chippers, Scalars, Pumps.

With built-in torque sensor
2 BLADE • SYSTEM WRENCHES

MODELS (YES. NO.)	TOOL NO.
YEX-150 (00)	0093 0000 00 00
YEX-150A (00)	0093 0000 00 01

■ Exploded View of Motor Case



■ Parts for Motor Case

No.	Name of Parts	Per Set	Parts No.
M	Motor Case Assy.	1set	0093 0011 00 99
M1	Motor Case (A) Assy.	1set	0093 0011 00 98
A1	Motor Case (B) Assy.	1set	0093 0011 00 97
	(a) Motor Case	1	0093 0011 00 00
	Throttle Bushing Assy.	1set	0093 0104 00 99
	(b) Throttle Bushing	1	*
	(c) O'Ring (N15)	1	9010 4008 00 00
	(d) Reverse Valve	1	0093 0005 00 00
	(e) Spring Roll Pin (2.5 x 12)	1	9250 1113 00 00
	(f) Spring (3 x 4)	1	8020 1246 00 00
	(g) Ball (1/8)	1	9150 3009 00 00
	(h) AA Pin (3 x 23.8)	1	8051 3041 00 00
	Throttle Rod Bushing Assy.	1set	0078 0105 00 99
	(i) Throttle Rod Bushing	1	*
	(j) O'Ring (NO.3)	1	9010 3021 00 00
	Throttle Rod Assy.	1	2058 0106 00 99
	(k) Throttle Rod	1	*
	(m) Snap Ring (ETW-2.8)	1	9010 4001 00 00
	(n) Throttle Knob	1	9040 5008 00 00
	(o) Spring Roll Pin (1.5 x 14)	1	0093 0153 00 00
	(p) Spring Roll Pin (6 x 10)	2	9250 2012 00 00
	(q) O'Ring (N40)	2	9010 4017 00 00
A2	Hose Joint	1	0237 0113 00 00
A3	Silencer Assy.	1set	0081 0053 00 99
A4	Spring Roll Pin (3 x 16)	1	9250 1050 00 00
A5	Upper Plate Assy.	1set	0093 0303 01 99
	(a) Upper Plate	1	0093 0303 01 00
	(b) Ball Bearing (#607)	1	9100 1060 00 00
A6	Cylinder Assy.	1set	0093 0304 01 99
	(a) Cylinder	1	*
	(b) Spring Roll Pin (2 x 6)	2	9250 1011 00 00
A7	Rotor	1	0093 0305 00 00
A8	Vane	6	0093 0306 00 00
A9	Lower Plate Assy.	1set	0093 0307 00 99
	(a) Lower Plate	1	0093 0307 00 00
	(b) Ball Bearing (#6900)	1	9100 1046 00 00
	(c) Spring Roll Pin (2.5 x 6)	1	8055 1053 00 00
A10	Lower Plate Spacer	1	0093 0311 00 00
M2	Holder Assy.	1set	0127 0171 00 99
M3	Tube (φ 3 x 15)	1	9380 5007 00 00
M4	Empire Tube (φ 1.0 x 15)	1	9380 8001 00 00
M5	Tube (φ 1.5 x 10)	5	9380 5008 00 00
M6	Micro Connector (PM-10)	1	8500 2001 00 00
M7	Buzzer (RKB6-4A0)	1	8440 1001 00 00
M8	Print Base (A)	1	0131 0798 00 01
M9	O'Ring (T20)	1	9010 1017 00 00
M10	Snap Ring (RTW-2)	1	9040 1014 00 00

The part "*" can not be supplied individually. So please order it as a unit of assembly shown by arrow mark (↑).