

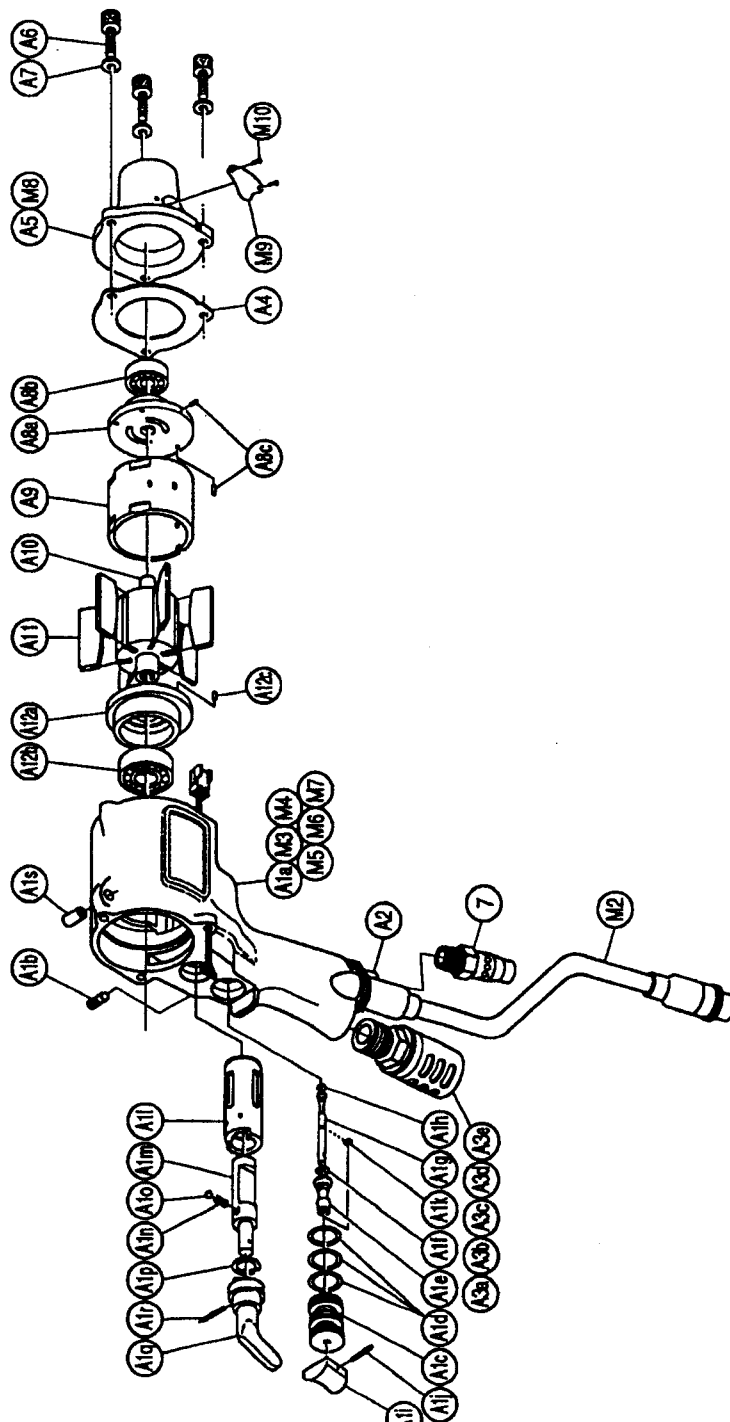


SYSTEM WRENCH

MODELS	(YES/No.)	TOOL No.
YEX-701	(02)	0143 0000 02 00
YEX-701-G	(02)	0143 0000 02 11

■ Parts for Motor Case

No.	Name of Parts	Per set	Parts No.	No.	Name of Parts	Per set	Parts No.
M	Motor Case Assy.	1 set	0143 0011 01 99	A17	Lower Plate Assy.	1 set	0945 0307 00 99
M1	Motor Case (A) Assy.	1 set	0130 0011 00 98		a) Lower Plate	1	0945 0307 00 00
	Motor Case (B) Assy.	1 set	0130 0011 00 97		b) Ball Bearing 6902	1	9100 1036 00 00
A1	Motor Case	1	*		c) S.R.Pin 2X5	1	9250 6001 00 00
	a) Screw M5X8 P=0.8	1	9480 1010 00 00	M2	Holder Assy.	1 set	0407 0717 00 99
	Throttle Bushing Assy.	1 set	2058 0104 00 99	M3	Contraction Tube 3 X15	1	9380 5007 00 00
	c) Throttle Bushing	1	*	M4	Contraction Tube 1.5 X10	4	9380 5008 00 00
	d) O-Ring N15	3	9010 4008 00 00	M5	Micro Connector PM-10	1	8500 2001 00 00
	Throttle Rod Bushing Assy.	1 set	0078 0105 00 99	M6	Socket Connector 170205-1	2	8480 1001 00 00
	e) Throttle Rod Bushing	1	*	M7	Socket Housing 171822-2	1	8470 1001 00 00
	f) O-Ring No.3 (Hs90)	1	9010 3021 00 00	M8	Buzzer Basic Assy.	1 set	0127 0798 00 98
	Throttle Rod Assy.	1 set	2058 0106 01 99	M9	Cover	1	0078 0708 00 00
	g) Throttle Rod	1	*	M10	+ Screw M3X5	2	9400 2019 00 00
	h) O-Ring N2	1	9010 4001 00 00				
	i) Throttle Knob	1	2024 0153 00 00				
	j) S.R.Pin 1.5X14	1	9250 1005 00 00				
	k) Snap Ring ETW-2.8	1	9040 5008 00 00				
	l) Reverse Bushing	1	0848 0004 01 00				
	m) Reverse Valve	1	0048 0005 01 00				
	n) Spring 3X10 N=7 0.5	1	8020 1004 00 00				
	o) Ball 1/8 S	1	9150 3009 00 00				
	p) Snap Ring IRTW-12	1	9040 3002 00 00				
	q) Reverse Lever	1	0048 0007 01 00				
	r) S.R.Pin 3X14	1	9250 1049 00 00				
	s) S.R.Pin 6X10	1	9250 1082 00 00				
A2	Hose Joint	1	0078 0113 00 00				
A3	Silencer Assy. PF3/8	1 set	0405 0053 01 99				
	a) Silencer Body PF3/8	1	3048 0081 02 00				
	b) Silencer Cover	1	0405 0032 00 00				
	c) Silencer Sheet	1	1105 0116 00 00				
	d) Joint Ring	1	9010 4010 00 00				
A4	O-Ring N20	1	0127 0003 00 01				
A5	S-Packing A	1	0127 0001 00 00				
A6	Motor Case Cover	3	8070 3050 00 00				
A7	Spring Washer M5	3	9200 3005 00 00				
A8	Upper Plate Assy.	1 set	0945 0303 00 99				
	a) Upper Plate	1	0945 0303 00 00				
	b) Ball Bearing 608	1	9100 1004 00 00				
	c) S.R.Pin 2X5	2	9250 6001 00 00				
A9	Cylinder	1	0122 0304 00 00				
A10	Rotor	1	0128 0305 00 00				
A11	Vane	8	0122 0308 00 00				



The part * can not be supplied individually.
So please order it as a unit of assembly
shown by arrow mark (↑).



YOKOTA EUROPE BV
e-mail info@impulsetools.com http://www.impulsetools.com
P.O. BOX 392 NL-1000 AJ AMSTERDAM PHONE: 020-625 29 53 FAX: 020-625 35 69
Hydraulic Impulse Wrenches, Impact Wrenches, Drills, Grinders, Sorew Drivers, Chippers, Pumps.

■ Parts for Liner Case

No.	Name of Parts	Per set	Parts No.
	Liner Case Assy.	1 set	0130 0422 04 99
L1	Liner Case	1	0130 0422 00 00
L2	O-Ring N38	2	9010 4018 00 00
L3	Liner Cap	1	0048 0423 00 00
L4	Liner Upper Plate	1	0077 0424 00 00
L5	O-Ring N32	1	9010 4014 00 00
L6	Liner Assy.	1 set	0129 0425 03 99
	a) Liner	1	※ 1
	b) Pin 3X5 <41-44HRC>	4	8052 1031 00 00
L7	Relief Valve	1	0129 0245 00 00
L8	Spring Guide (B) Assy.	1 set	0129 0510 00 99
	a) Spring Guide B	1	※ 1
	b) O-Ring N2	1	9010 4001 00 00
L9	Liner Shaft	1	0130 0798 01 00
L10	Blade	2	0129 0719 03 00
L11	Double Spring	2	8020 1310 00 00
	Spring 3.6X29.5	2	8020 1309 00 00
	Spring 2.4X29.5	2	8020 1309 00 00
L12	Liner Lower Plate (A) Assy.	1 set	0078 0428 03 98
	a) Liner Lower Plate	1	※ 1
	b) Nylon Bushing M3	1	0260 0431 00 00
	c) Bushing	1	0260 0728 00 00
	d) Adjust Bolt	1	0078 0522 01 00
L13	Oil Plug M4	1	0048 0010 00 00
L14	Washer 6.5X8.5X1.1	1	8040 1073 00 00
L15	O-Ring N4	1	9010 4021 00 00
L16	O-Ring 2.8X12.8X18.4 Hs70'	1	9010 6014 00 00
L17	Back-Up Ring 13X18X0.6	1	9090 1005 00 00
L18	O-Ring N5	2	9010 4033 00 00
	S-Packing B	1	0127 0003 00 02

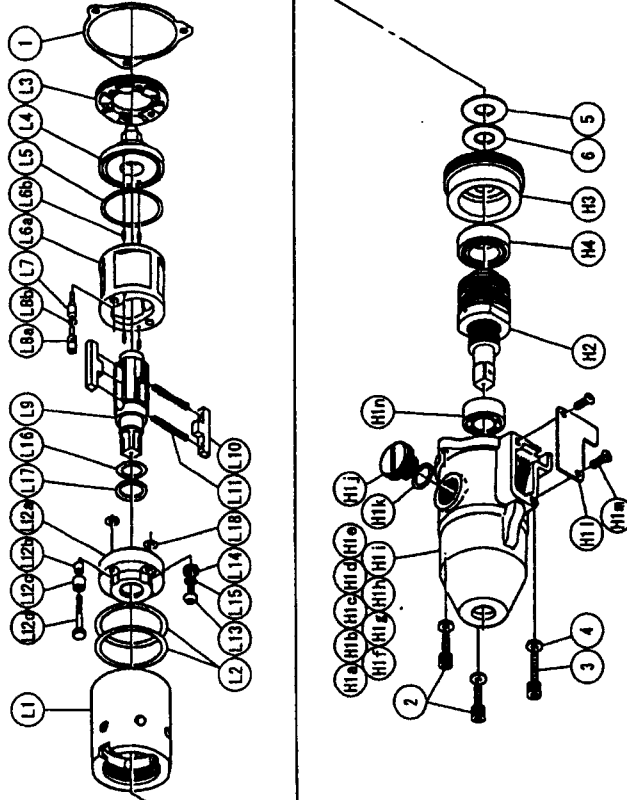
The part "※" can not be supplied individually.
So please order it as a unit of assembly
shown by arrow mark (↑).

yokota
PULSATION TOOLS

SYSTEM WRENCH

MODELS (YES/No.)	TOOL No.
YEX-701 (02)	0143 0000 02 00
YEX-701-G (02)	0143 0000 02 11

■ Exploded View of Liner Case and Hammer Case



■ Parts For Hammer Case

No.	Name of Parts	Per set	Parts No.
H	Hammer Case Assy.	1 set	0143 0401 01 99
H1	Hammer Case Assy. (1)	1 set	0143 0401 01 69
	a) Hammer Case	1	※ 1
	b) Core A Assy.	1 set	※ 1
	c) Core B	1	※ 1
	d) Spacer A	1	※ 1
	e) Core C	1	※ 1
	f) Core D Assy.	1 set	※ 1
	g) Screw M4X5 P=0.7	1	9480 1006 00 00
	h) Contraction Tube 1.5'X9	4	9380 5010 00 00
	i) Micro Connector OX-202	4	8500 4001 00 00
	j) Regulator Cap	1	0143 0204 00 00
	k) O-Ring N12	1	9010 4005 00 00
	l) Cover Plate	1	0143 0014 00 00
	m) + Screw M4X8 P=0.7	2	9410 2004 00 00
	n) Ball Bearing 6901ZZ	1	9100 5029 00 00
H2	Main Shaft 3/8 Assy.	1 set	0232 0614 00 99
H3	Bearing Case	1	0127 0650 00 00
H4	Ball Bearing 6903ZZ	1	9100 5025 00 00
2	Hex. Bolt M4X14 P=0.7	2	8070 3008 00 00
3	Hex. Bolt M4X22 P=0.7	1	8070 3011 00 00
4	Spring Washer M4	3	9200 3004 00 00
5	Washer 12.3X21X2.8	1	8040 8027 00 00
6	Washer 12.5X21X0.5	1	8041 5033 00 00
7	Touch Joint 1/4-07	1	9690 0007 00 00
	Standard Accessories		
	TF Pin 2X90	1	8051 6001 00 00
	Protector	1	0143 0029 00 00
	Parts for YEX-701-G <02>		
H'	Hammer Case Assy.	1 set	0143 0401 00 35
H1'	Hammer Case (A) Assy.	1 set	0143 0401 00 34
	a) Hammer Case A	1	※ 1
	Standard Accessories		
	TF Pin 2X90	1	8051 6001 00 00

The part "※" can not be supplied individually.
So please order it as a unit of assembly
shown by arrow mark (↑).



YOKOTA EUROPE BV

e-mail info@impulsetools.com http://www.impulsetools.com
P.O. BOX 392 NL-1000 AJ AMSTERDAM PHONE: 020-625 28 53 FAX: 020-625 35 69
Hydraulic Impulse Wrenches, Impact Wrenches, Drills, Grinders, Screw Drivers, Chippers, Scales, Pumps.