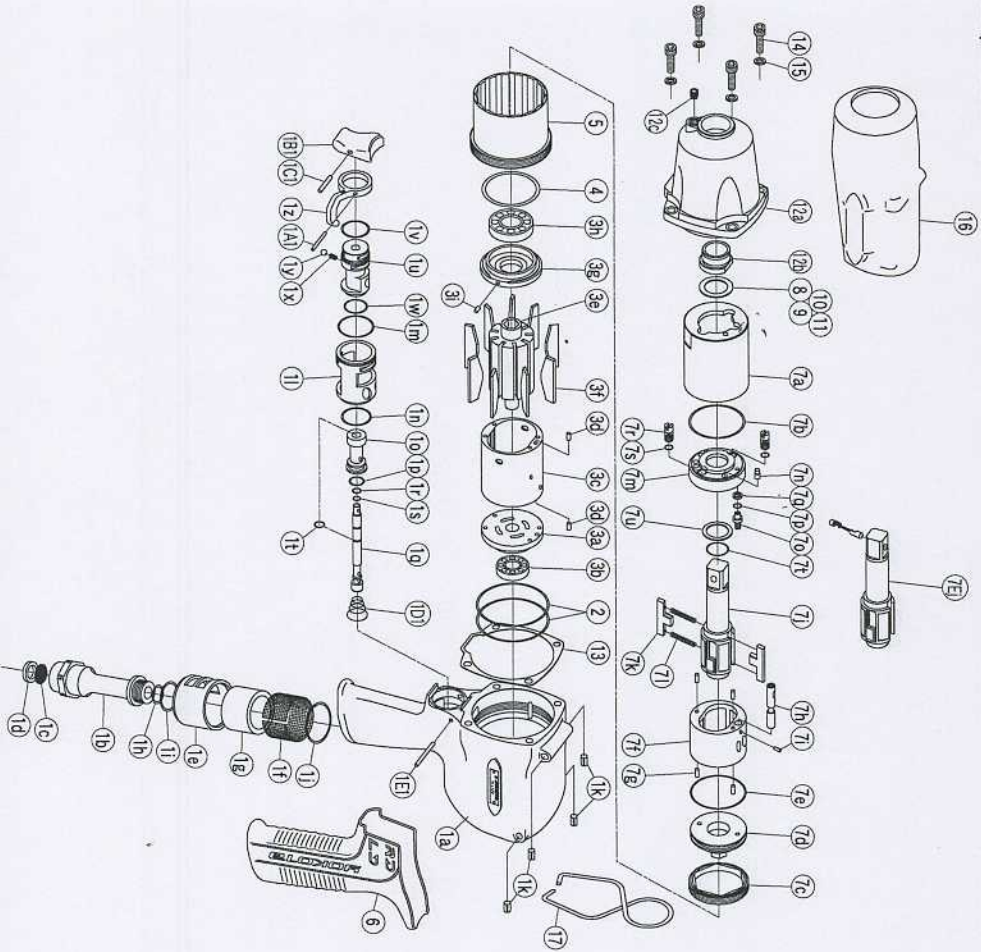


## IMPULSE WRENCH

MODEL (YES.No.)	TOOL No.
YL140 (00)	0346 0000 0000
YL140E (00)	0346 0000 0009

Exploded View



### Parts List

No.	Name of Parts	Per Set	Parts No.
1	Motor Case Assy.	1set	0346 0011 00 99
	(a) Motor Case	1	※ ↓
	(b) Hose Joint Assy.	1set	0345 0113 00 99
	(c) Hose Joint	1	※ ↑
	(d) Strainer (7.5X11X2)	1	0259 0111 00 00
	(e) Washer (7.5X11X2)	1	8042 2008 00 00
	(f) Exhaust Cover (A)	1	0335 0016 00 00
	(g) Silencer Sheet (D)	1	0412 0032 00 01
	(h) O - Ring (N12)	1	0346 0032 00 04
	(i) O - Ring (N16)	1	9010 4005 00 00
	(j) O - Ring (N24)	1	9010 4009 00 00
	(k) Spring Pin (5X8)	4	9010 4012 00 00
	Throttle Assy.	1set	0341 0186 03 99
	(l) Throttle Bushing	1	0341 0104 00 00
	(m) O - Ring (0.7X21.5X22.9)	1	9010 6045 00 00
	(n) O - Ring (N20)	1	9010 4010 00 00
	Throttle Rod Bushing Assy.	1set	0341 0105 00 99
	(o) Throttle Rod Bushing (P10)	1	※ ↑
	(p) O - Ring	1	9010 1054 00 00
	Throttle Rod	1set	0341 0106 02 99
	(q) Throttle Rod	1	※ ↓
	(r) O - Ring (0.5X3.7X4.7)	1	9010 6034 00 00
	(s) O - Ring (P4)	1	9010 1056 00 00
	(t) Snap Ring (ETW-2.8)	1	9040 5008 00 00
	(u) Reverse Valve	1	0341 0005 01 00
	(v) O - Ring (0.6X1.8X1.9)	1	9010 6046 00 00
	(w) O - Ring (N16)	1	9010 4009 00 00
	(x) Spring (3X4)	1	8020 1246 00 00
	(y) Ball (1/8)	1	9150 3009 00 00
	(z) Reverse Lever	1	0341 0007 00 00
	(A1) Spring Pin (2X12)	1	9250 1015 00 00
	(B1) Throttle Knob	1	0158 0153 00 00
	(C1) Spring Pin (1.5X1.4)	1	9250 1005 00 00
	(D1) Conical Spring (5.24X16X7)	1	8020 3070 00 00
	(E1) Pin (2X25)	1	8055 1051 00 00
2	O - Ring (N55)	2	9010 4036 00 00
3	Motor Assy.	1set	0341 0305 00 99
	Upper Plate Assy.	1set	0341 0303 00 99
	(a) Upper Plate	1	0341 0303 00 00
	(b) Ball Bearing (16001CM)	1	9102 1014 00 00
	Cylinder Assy.	1set	0341 0304 00 99
	(c) Cylinder	1	※ ↑
	(d) Pin (2.5X6)	2	8055 1053 00 00
	(e) Rotor	1	0341 0305 00 00
	(f) Vane	9	0341 0306 00 00
	Lower Plate Assy.	1set	0341 0307 00 99
	(g) Lower Plate (68004)	1	0341 0307 00 00
	(h) Ball Bearing (2X5)	1	9100 1045 00 00
	(i) Pin	1	8055 1040 00 00
4	ST - Packing (38.5X46X0.2)	1	8011 1108 00 00
5	Lower Plate Spacer	1	0346 0311 00 00
6	Rubber Grip	1	0188 0144 00 00
7	Liner Case Assy.	1set	0346 0422 01 99
	(a) O - Ring (1.4X39.6X42.4)	1	0346 0422 00 00
	(b) O - Ring (N3)	1	9010 6058 00 00
	(c) Liner Cap	1	0341 0423 00 00
	(d) Liner Upper Plate	1	0341 0424 00 00
	(e) O - Ring (N38)	1	9010 4025 00 00
	Liner Assy.	1set	0346 0425 00 99
	(f) Liner	1	※ ↓
	(g) Pin (3.5X5.8 41-44 HRC)	4	8052 1046 00 00
	(h) Relief Valve	1	0341 0245 00 00
	(i) Pin FF (2X4.8)	1	8051 1037 00 00
	(j) Main Shaft	1	0346 0614 01 01
	(k) Blade	2	0341 0719 00 00
	(l) Spring (3.9X43.5)	2	8020 1355 00 00
	(m) Liner Lower Plate Assy.	1set	0345 0426 00 99
	(n) Liner Lower Plate	1	0345 0426 00 00
	(o) Dowel Pin	1	0345 0308 00 00
	(p) O - Ring (N3)	1	0345 0522 00 00
	(q) Back-up Ring (3.7X5.5X1)	1	9090 1032 00 00
	(r) Oil Plug	2	0181 0010 00 00
	(s) O - Ring (N2)	2	9010 4001 00 00
	(t) O - Ring (P16)	1	9010 1047 00 00
	(u) Back-up Ring (16X19.8X1)	1	9090 1029 00 00
8	Washer (16.5X22X0.2)	1	8041 5080 00 00
9	Washer (16.5X22X0.3)	1	8041 5086 00 00
10	Washer (16.5X22X0.4)	1	8041 5061 00 00
11	Washer (16.5X22X0.5)	1	8041 5039 00 00
12	Hammer Case Assy.	1set	0346 0401 00 99
	(a) Hammer Case	1	0346 0401 00 00
	(b) Main Shaft Bushing	1	0190 0612 00 00
	(c) Socket Plug (1/16-27)	1	8210 4001 00 00
13	S - Packing	1	0346 0003 00 00
14	Hexagon Socket Bolt (M5X14)	4	8070 3050 00 00
15	Spring Washer (M5)	4	9200 3005 00 00
Parts for YL140E			
7E	Liner Case Assy.	1set	0346 0422 00 97
	(J) Main Shaft Assy.(E-type)	1set	0346 0614 00 98
Standard Accessories			
16	Protector	1	0346 0029 00 00
17	Hanger	1	0188 0017 00 00
	Hex. Wrench (H1.5X65X65)	1	9610 1012 00 00
	Hex. Wrench (H5/32)	1	9610 3008 00 00

The part "※" can not be supplied individually.

So please order it as a unit of assembly shown by arrow mark (↑).

☆ marked parts; use one of them.



# YOKOTA EUROPA BV

De Ruijterkade 120, 1011 AB Amsterdam, Netherlands. PHONE 020-5318800. FAX 020-5318808  
 e-mail: info@impulsetools.com, http://www.impulsetools.com,  
 Hydraulic Impulse Wrenches, Impact Wrenches, Drills, Grinders, Screw Drivers, Chippers, Sockets, Pumps.