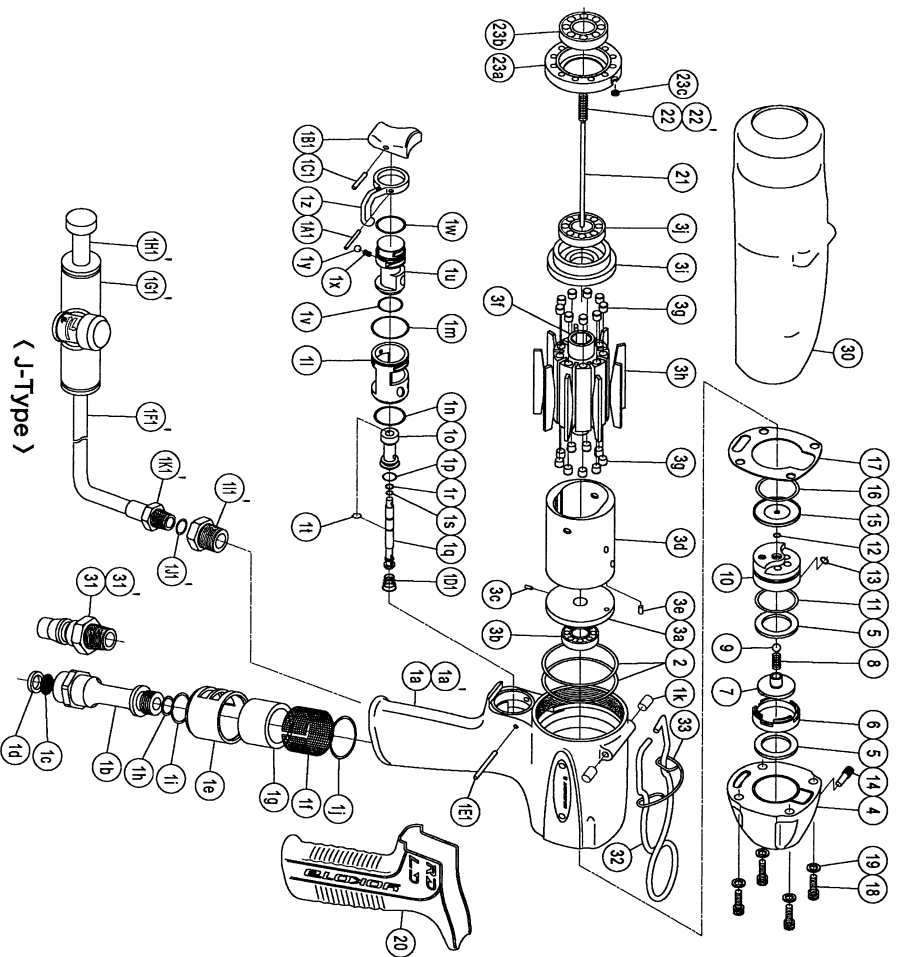


IMPULSE WRENCH

MODEL (YES.No.)	TOOL No.	MODEL (YES.No.)	TOOL No.
YL1140 (00)	0381 0000 0000	YL1140E (00)	0381 0000 0009
YL1140L (00)	0381 0000 0008	YL1140EL (00)	0381 0000 0084

Exploded View of Motor Case



Parts for Motor Case

No.	Name of Parts	Per Set	Parts No.
1	Motor Case Assy.	1set	0381 0011 00 99
(a)	Motor Case	1	※ ↑
(b)	Hose Joint Assy.	1set	0345 0113 00 99
(c)	Hose Joint	1	※ ↑
(d)	Strainer	1	0259 0111 00 00
(e)	Washer (7.5x11x2)	1	8042 2008 00 00
(f)	Exhaust Cover	1	0380 0016 00 00
(g)	Silencer Sheet (A)	1	0142 0032 00 01
(h)	Silencer Sheet (D)	1	0346 0032 00 04
(i)	O-Ring (S12)	1	9010 4005 00 00
(j)	O-Ring (S16)	1	9010 4009 00 00
(k)	O-Ring (S24)	1	9010 4012 00 00
(l)	Spring Pin (5x8)	2	9250 2027 00 00
(m)	Throttle Bushing	1set	0380 0186 00 99
(n)	Throttle Rod Assy.	1	0341 0104 00 00
(o)	O-Ring (P10)	1	※ ↑
(p)	Throttle Rod Bushing	1	0341 0106 02 00
(q)	Throttle Rod	1	0341 0106 02 00
(r)	O-Ring (0.5x3.7x4.7)	1	9010 6034 00 00
(s)	O-Ring (P4)	1	9010 1056 00 00
(t)	Snap Ring (ETW-28)	1	9040 5008 00 00
(u)	Reverse Valve	1	0380 0005 00 00
(v)	O-Ring (0.6x1.8x1.92)	1	9010 6046 00 00
(w)	O-Ring (S16)	1	9010 4009 00 00
(x)	Spring (3x4)	1	8020 1246 00 00
(y)	Ball (1/8)	1	9150 3009 00 00
(z)	Reverse Lever	1	0341 0007 00 00
(A)	Spring Pin (2x1.2)	1	9250 1015 00 00
(B)	Throttle Knob	1	0158 0153 00 00
(C)	Spring Pin (1.5x1.4)	1	9250 1005 00 00
(D)	Conical Spring (5.2x4.7x6.7)	1	8020 3070 00 00
(E)	Pin (2x2.5)	1	8055 1051 00 00
2	O-Ring (1.78x50.5x54.08)	2	9010 6073 00 00
3	Motor Assy.	1set	0381 0305 00 99
(a)	Upper Plate Assy.	1set	0381 0303 00 99
(b)	Ball Bearing (6900CM)	1	0381 0303 00 00
(c)	Pin (2x5)	1	8055 1040 00 00
(d)	Cylinder Assy.	1set	0381 0304 00 99
(e)	Cylinder (2.5x6)	1	※ ↑
(f)	Rotor	1	0381 0305 00 00
(g)	blind Cap	18	0380 0018 00 00
(h)	Vane	9	0381 0305 00 00
(i)	Lower Plate Assy.	1set	0381 0307 00 99
(j)	Lower Plate	1	0381 0307 00 00
(k)	Ball Bearing (6903CM)	1	9102 1018 00 00

No.	Name of Parts	Per Set	Parts No.
4	Motor Case Cover	1	0381 0001 00 00
5	Back-up Ring (19x26x1.5)	2	9090 1035 00 00
6	Buffer Plate	1	0380 0297 00 00
7	Shut Off Valve	1	0379 0295 00 00
8	Spring (3.95x8.6)	1	8020 1387 00 00
9	Ball (4mm)	1	9150 1035 00 00
10	Shut Off Valve Bushing	1	0379 0296 00 00
11	O-Ring (S22)	1	9010 4011 00 00
12	O-Ring (N2)	1	9010 4001 00 00
13	O-Ring (1.4x2.16x4.96)	1	9010 6068 00 00
14	Valve Plug	1	0379 0298 00 00
15	Upper Plate Spacer	1	0379 0301 00 00
16	O-Ring (S22)	1	9010 4011 00 00
17	S-Packing	1	0381 0003 00 00
18	Hexagon Socket Bolt (M4x10)	4	8070 3159 00 00
19	Washer (4x6x1.2)	4	8041 6016 00 00
20	Rubber Grip	1	0188 0144 00 00
21	Rod	1	0381 1368 00 00
22	Spring (5.4x20)	1	8020 1388 00 00
23	Lower Plate Spacer Assy.	1set	0381 0311 00 99
(a)	Lower Plate Spacer	1	0381 0311 00 00
(b)	Ball Bearing (6803)	1	9100 1061 00 00
(c)	Washer (WSSB4-2-2)	1	8041 6015 00 00

Parts for YL1140L·140EL			
22	Spring (5.7x20)	1	8020 1399 00 00

Parts for YL1140E·140EL			
31	Hose Nipple Assy. (XA-352)	1	8110 1004 00 99

Special Common Parts for J Type			
1	Motor Case Assy.	1set	0381 0011 00 98
(a)	Motor Case(A)	1	※ ↑
(f)	Tube (4x2.5x150mm)	1	9380 6037 00 00
(g)	Tube Joint	1	9643 4002 00 00
(h)	Blank Plug	1	9641 3006 00 00
(i)	Bushing	1	0371 0728 00 00
(j)	O-Ring (1.19x1.78x4.16)	1	9010 6074 00 00
(k)	Hose Nipple	1	0371 0151 00 00

Standard Accessories			
30	Protector	1	0381 0029 00 00
31	Touch Joint	1	9690 0002 00 00
32	Hanger	1	0099 0017 00 00
33	Hanger Clip	1	0190 1801 00 00
	Hex Wrench (H1.5x65x65)	1	9610 1012 00 00
	Hex Wrench (H5/32)	1	9610 3008 00 00



YOKOTA EUROPA BV

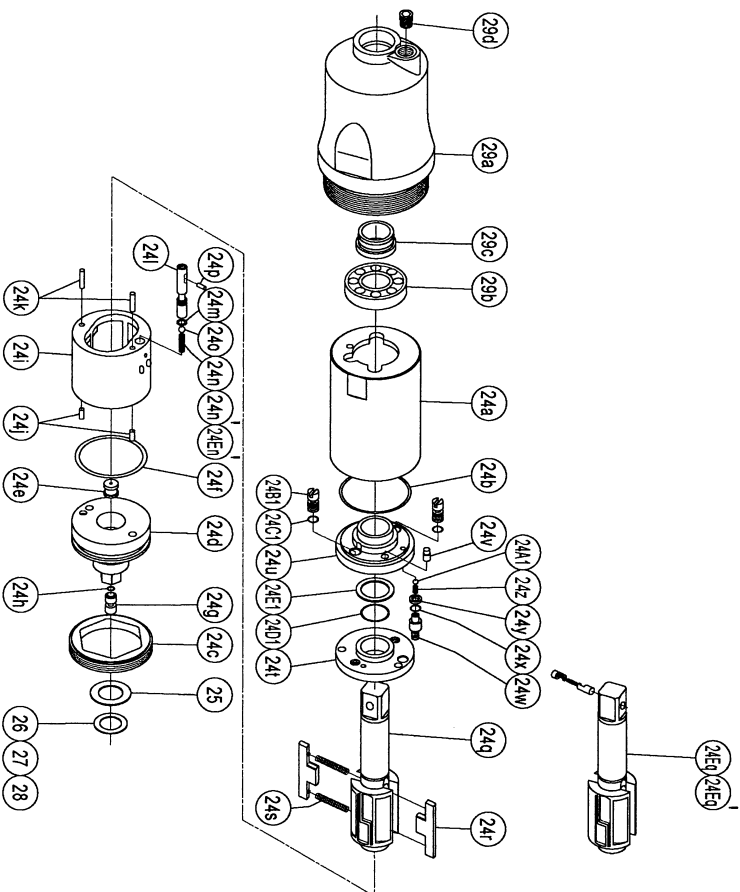
De Ruiterskade 120, 1017 AB Amsterdam, Netherlands. PHONE: 020-531 8800 FAX: 020-531 8808
 E-mail: info@impulsetools.com. http://www.impulsetools.com
 Hydraulic Impulse Wrenches, Impact Wrenches, Drills, Sanders, Screw Drivers, Clippers, Sealers, Pumps.

The part "※" can not be supplied individually.
 So please order it as a unit of assembly shown by arrow mark (↑).

IMPULSE WRENCH

MODEL (YES.No.)	TOOL No.	MODEL (YES.No.)	TOOL No.
YLT140 (00)	0381 0000 0000	YLT140E (00)	0381 0000 0009
YLT140L (00)	0381 0000 0008	YLT140EL (00)	0381 0000 0084

Exploded View of Liner Case and Hammer Case



Parts for Liner Case and Hammer Case

No.	Name of Parts	Per Set	Parts No.
24	Liner Case Assy.	1set	0381 0422 00 99
	(a) Liner Case	1	0381 0422 00 00
	(b) O-Ring (1.4x39.6x4.2)	1	9010 6038 00 00
	(c) Liner Cap	1	0380 0423 00 00
	(d) Liner Upper Plate	1	0381 0424 00 00
	(e) Liner Upper Plate(A)	1	0379 0424 00 01
	(f) O-Ring (1.78x38.1x41.66)	1	9010 6071 00 00
	(g) Sensor	1	0379 0794 00 00
	(h) O-Ring (N4)	1	9011 0014 00 00
	Liner Assy.	1set	0381 0425 00 99
	(i) Liner	1	※ ↑
	(j) Pin (3.5x5.8)	2	8052 1046 00 00
	(k) Pin (3.5x9.8)	2	8052 1054 00 00
	(l) Relief Valve	1	0381 0245 00 00
	(m) O-Ring (0.71x3.76x5.18)	1	9010 6072 00 00
	(n) Spring (3.15x12.1)	1	8020 1385 00 00
	(o) Ball (3.5mm)	1	9150 1004 00 00
	(p) Pin FF (2x4.8)	1	8051 1037 00 00
	(q) Main Shaft	1	0381 0614 00 01
	(r) Blade	2	0341 0719 00 00
	(s) Spring (3.9x4.3.5)	2	8020 1385 00 00
	(t) Liner Lower Plate(A)	1	0380 0426 00 01
	(u) Liner Lower Plate(B) Assy.	1set	0380 0426 00 99
	(v) Liner Lower Plate(B)	1	0380 0426 00 02
	(w) Dowel Pin	1	0345 0308 00 00
	(w) Adjust Bolt	1	0380 0522 00 00
	(x) O-Ring (N2)	1	9010 4001 00 00
	(y) Back-up Ring (3.2x5x1)	1	9090 1028 00 00
	(z) Spring (1.9x2.5)	1	8020 1385 00 00
	(A) Ball (2mm)	1	9150 1001 00 00
	(B) Oil Plug	2	0181 0010 00 00
	(C) O-Ring (N2)	2	9010 4001 00 00
	(D) O-Ring (P16)	1	9010 1047 00 00
	(E) Back-up Ring (16x19.8x1)	1	9090 1029 00 00
25	Washer (12.6x21x1)	1	8040 6037 00 00
26*	ST-Packing (12.6x21x0.1)	1	8012 1127 00 00
27*	ST-Packing (12.6x21x0.2)	1	8012 1128 00 00
28*	ST-Packing (12.6x21x0.3)	1	8012 1129 00 00

No.	Name of Parts	Per Set	Parts No.
29	Hammer Case Assy.	1set	0381 0401 00 99
	(a) Hammer Case	1	0381 0401 00 00
	(b) Ball Bearing (6074)	1	9100 1082 00 00
	(c) Main Shaft Bushing	1	0379 0612 00 00
	(d) Socket Plug (1/16-27)	1	8210 4001 00 00

Parts for YLT140L			
24	Liner Case Assy.	1set	0381 0422 00 94
	(n) Spring (3.05x12.1)	1	8020 1386 00 00

Parts for YLT140E			
24E	Liner Case Assy.	1set	0381 0422 00 95
	(g) Main Shaft Assy. (E-type)	1set	0381 0614 00 98

Parts for YLT140EL			
24E	Liner Case Assy.	1set	0381 0422 00 91
	(n) Spring (3.05x12.1)	1	8020 1386 00 00
	(g) Main Shaft Assy. (E-type)	1set	0381 0614 00 98

The part "※" can not be supplied individually.
 So please order it as a unit of assembly shown by
 arrow mark (↑).
 *Marked parts ; use one of them.



YOKOTA EUROPA BV

De Ruijterkade 120, 1071 AB Amsterdam, Netherlands. PHONE: 020-531 8800 FAX: 020-531 8808
 E-mail: info@impulsetools.com, http://www.impulsetools.com
 Hydraulic Impulse Wrenches, Impact Wrenches, Drills, Grinders, Screw Drivers, Chippers, Sealers, Pumps.