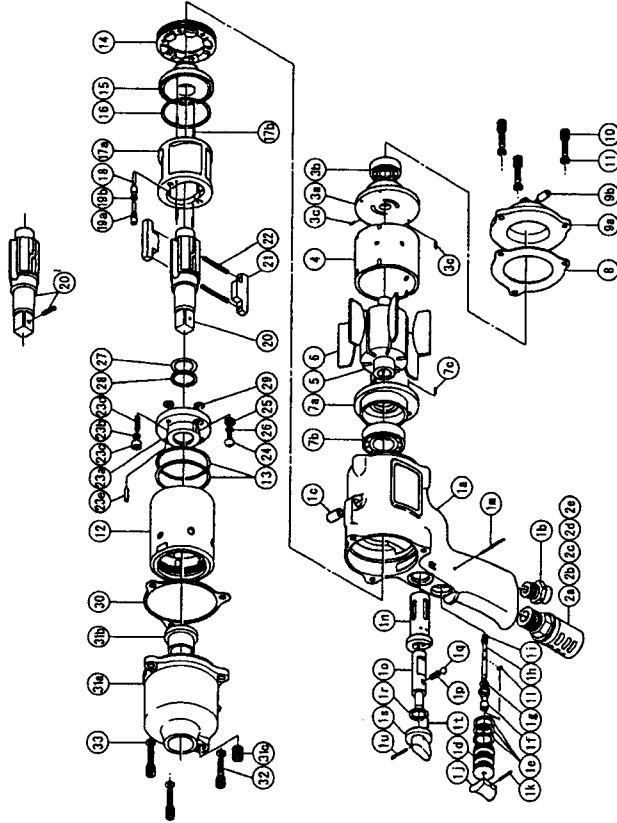




FA SYSTEM & AIR TOOLS

IMPULSE WRENCH

MODELS (YESNo.)	TOOL No.
YX-1400 (06)	0322 0000 06 00
YX-1400E (06)	0322 0000 06 04



PARTS LIST

No.	Name of Parts	Per set	Parts No.	No.	Name of Parts	Per set	Parts No.
1	Motor Case Assy.	1 ㊦	0322 0011 0099	10	Hex. Bolt M5X18 P=0.8	3	8070 3052 0000
	a)Motor Case	1	※ ↑	11	Spring Washer M5	3	9200 3005 0000
	b)Hose Joint	1	0237 0113 0000	12	Liner Case	1	0322 0422 0100
	c)S.R.Pin 8X12	1	9250 1110 0000	13	O-Ring N50	2	9010 4042 0000
	Throttle Bushing Assy.	1 ㊦	0229 0104 0099	14	Liner Cap	1	0322 0423 0000
	d)Throttle Bushing	1	※ ↑	15	Liner Upper Plate	1	0322 0424 0000
	e)O-Ring N15	3	9010 4008 0000	16	O-Ring N44	1	9010 4020 0000
	Throttle Rod Bushing Assy.	1 ㊦	0323 0105 0099	17	Liner Assy.	1 ㊦	0322 0425 0399
	f)Throttle Rod Bushing	1	※ ↑		a)Liner	1	※ ↑
	g)O-Ring No.5 (Hs90)	1	9010 3022 0000		b)Pin 3X7 <41-44HRC>	4	8052 1032 0000
	Throttle Rod Assy.	1 ㊦	0229 0106 0199	18	Relief Valve	1	0322 0245 0000
	h)Throttle Rod	1	※ ↑	19	Spring Guide (B) Assy.	1 ㊦	0322 0510 0099
	i)O-Ring N2	1	9010 4001 0000		a)Spring Guide B	1	※ ↑
	j)Throttle Knob	1	2024 0153 0000		b)O-Ring N3	1	9010 4025 0000
	k)S.R.Pin 1.5X14	1	9250 1005 0000	20	Main Shaft 1/2	1	0322 0614 0501
	l)Snap Ring ETW-2.8	1	9040 5008 0000	21	Blade	2	0322 0719 0100
	m)Slotted Pin G 3X24	1	8410 6024 0000	22	Spring 4.1X36	2	8020 1257 0000
n)Reverse Bushing	1	0229 0004 0000	23	Liner Lower Plate (A) Assy.	1 ㊦	0322 0426 0498	
o)Reverse Valve	1	0320 0005 0000		a)Liner Lower Plate	1	※ ↑	
p)Spring 4X6 N=3 0.5	1	8020 1022 0000		b)Nylon Bushing M4	1	0261 0431 0000	
q)Ball M4 S	1	9150 1005 0000		c)Bushing	1	0261 0728 0000	
r)Snap Ring IRTW-14	1	9040 3004 0000		d)Screw M4X14	1	9480 2022 0000	
Reverse Lever Assy.	1 ㊦	0322 0007 0099		e)S.R.Pin 4X8	1	9250 2024 0000	
s)Reverse Lever	1	※ ↑	24	Oil Plug M4	1	0048 0010 0000	
t)S.R.Pin 2X6	1	9250 1011 0000	25	Washer 6.5X8.5X1.1	1	8040 1073 0000	
u)S.R.Pin 3X14	1	9250 1049 0000	26	O-Ring N4	1	9010 4021 0000	
2	Silencer Assy. PF3/8	1 ㊦	3048 0053 0299	27	O-Ring 2.55X17.8X22.9 (Hs70)	1	9010 6017 0000
	a)Silencer Body PF3/8	1	※ ↑	28	Back-Up Ring 18X22.4X0.8	1	9090 1006 0000
	b)Silencer Cover	1	3048 0081 0200	29	O-Ring N6	2	9010 4026 0000
	c)Silencer Sheet	1	3048 0032 0000	30	S-Packing B	1	0322 0003 0002
	d)Joint Ring	1	1105 0116 0000	31	Hammer Case Assy.	1 ㊦	0322 0401 0099
	e)O-Ring N20	1	9010 4010 0000		a)Hammer Case	1	0322 0401 0000
	Upper Plate Assy.	1 ㊦	0941 0303 0199		b)Main Shaft Bushing	1	0229 0612 0000
	a)Upper Plate	1	0941 0303 0100		c)Socket Plug Pt1/8	1	8210 5001 0000
	b)Ball Bearing 6201	1	9100 1021 0000	32	Hex. Bolt M5X18 P=0.8	3	8070 3052 0000
	c)S.R.Pin 2X6	2	9250 6002 0000	33	Spring Washer M5	3	9200 3005 0000
	3	Cylinder	1	0322 0304 0000		Standard Accessories	
Rotor		1	0322 0305 0000		Touch Joint 1/4-02	1	9690 0002 0000
Vane		6	0322 0306 0100		Hexagon Wrench H2X65X65	1	9610 1013 0000
Lower Plate Assy.		1 ㊦	0941 0307 0199		Hexagon Wrench H5	1	9610 1006 0000
a)Lower Plate		1	0941 0307 0100				
b)Ball Bearing 6004		1	9100 1019 0000		Parts for YX-1400E <06>		
c)S.R.Pin 2X6		1	9250 6002 0000	20	Main Shaft 1/2 Assy.	1 ㊦	0322 0614 0659
S-Packing A		1	0322 0003 0001				
Motor Case Cover Assy.		1 ㊦	0322 0001 0099				
a)Motor Case Cover		1	※ ↑				
4	b)S.R.Pin 8X12	1	9250 1110 0000				

The part "※" can not be supplied individually.

So please order it as a unit of assembly

shown by arrow mark (↑).

032206-Y0301

**YOKOTA EUROPE BV**  
 e-mail info@impulsetools.com http://www.impulsetools.com  
 P.O. BOX 392 NL-1000 AJ AMSTERDAM PHONE: 020-625 29 53 FAX: 020-625 35 69  
 Hydraulic Impulse Wrenches, Impact Wrenches, Drills, Grinders, Screw Drivers, Chippers, Scales, Pumps.

