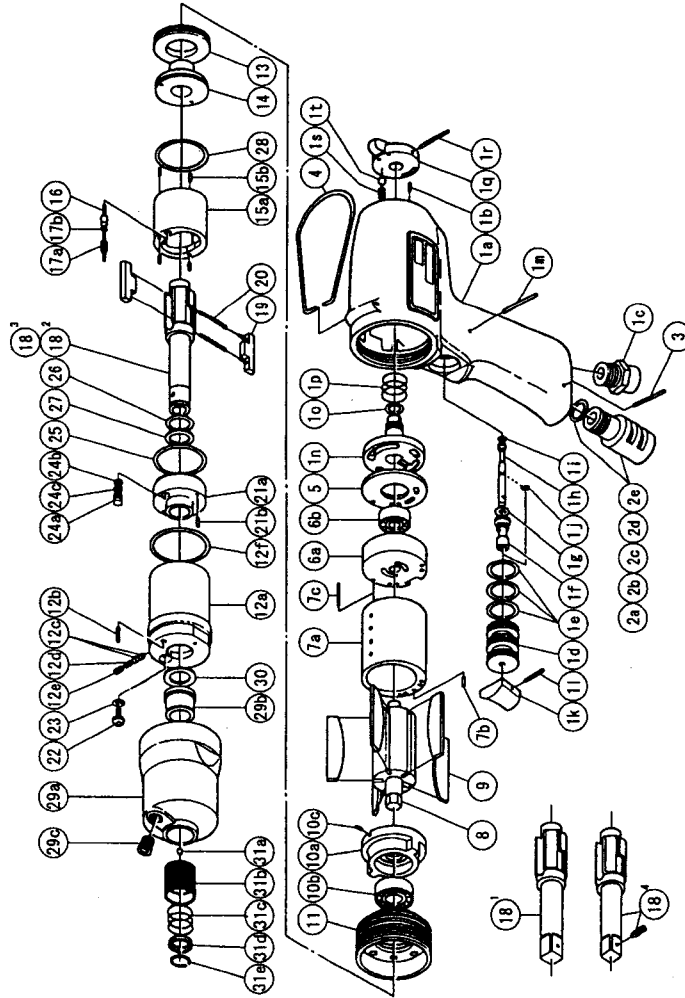




IMPULSE WRENCH

MODELS (YES/No.)	TOOL No.
YX-280 (06)	0081 0000 06 00
YX-280A (06)	0081 0000 06 01
YX-280B (06)	0081 0000 06 02
YX-280E (06)	0081 0000 06 04




The part "*" can not be supplied individually.
So please order it as a unit of assembly
shown by arrow mark (↑).

* marked parts: use one of them.

PARTS LIST

No.	Name of Parts	Per set	Parts No.	No.	Name of Parts	Per set	Parts No.
1	Motor Case Assy.	1 set	0081 0011 0299	13	Liner Cap	1	0081 0423 0100
	a) Motor Case	1	*	14	Liner Upper Plate	1	0259 0424 0100
	b) S.R.Pin 3X6	1	9250 1043 0000	15	Liner Assy.	1 set	0259 0425 0199
	c) Hose Joint	1	0237 0113 0000		a) Liner	1	*
	Throttle Bushing Assy.	1 set	2058 0104 0099		b) AA Pin 2X5 <41-44HRC>	4	8052 3002 0000
	d) Throttle Bushing	1	*	16	Relief Valve	1	0081 0245 0100
	e) O-Ring N15	3	9010 4008 0000	17	Spring Guide (B) Assy.	1 set	0081 0510 0199
	Throttle Rod Bushing Assy.	1 set	0078 0105 0099		a) Spring Guide B	1	*
	f) Throttle Rod Bushing	1	*		b) O-Ring 0.7X2X3.4	1	9010 6020 0000
	g) O-Ring No.3 (Hs90)	1	9010 3021 0000	18	Main Shaft	1	0081 0614 0501
	Throttle Rod Assy.	1 set	2058 0106 0199	19	Blade	2	0081 0719 0300
	h) Throttle Rod	1	*	20	Spring 3.1X20	2	8020 1296 0000
	i) O-Ring N2	1	9010 4001 0000	21	Liner Lower Plate Assy.	1 set	0158 0426 0099
	j) Snap Ring ETW-2.8	1	9040 5008 0000		a) Liner Lower Plate	1	*
	k) Throttle Knob	1	2024 0153 0000		b) S.R.Pin 3X8	1	9250 2022 0000
	l) S.R.Pin 1.5X14	1	9250 1005 0000	22	Oil Plug	1	0081 0010 0100
	m) Slotted Pin G 3X24	1	8410 6024 0000	23	O-Ring N3	1	9010 4025 0000
	Reverse Valve Assy.	1 set	2096 0005 0099	24	Oil Stop Cap Assy.	1 set	0081 0602 0099
	n) Reverse Valve	1	*		a) Oil Stop Cap	1	*
	o) O-Ring P7	1	9010 1005 0000		b) O-Ring N2	1	9010 4001 0000
	p) Spring 13.4X9	1	8020 1209 0000		c) Back-Up Ring	1	9090 2001 0000
	q) Reverse Lever	1	2014 0007 0100	25	O-Ring 1X2.5 2X27.2	1	9010 6012 0000
	r) Pin 2X22	1	8055 1050 0000	26	O-Ring 2.3X11.8X16.4	1	9010 6019 0000
	s) Spring 3X6 N=4 0.4	1	8020 1008 0000	27	Back-Up Ring 12X16X0.8	1	9090 1010 0000
	t) Ball M3 S	1	9150 1003 0000	28	O-Ring 1.5X26.5X29.5	1	9010 6023 0000
2	Silencer Assy.	1 set	0081 0053 0099	29	Hammer Case Assy.	1 set	0081 0401 0199
	a) Silencer	1	*		a) Hammer Case	1	0081 0401 0100
	b) O-Ring N10	1	9010 4004 0000		b) Main Shaft Bushing	1	0081 0612 0000
	c) Silencer Sheet B	1	0095 0032 0002	30	Socket Plug Pt1/8	1	8210 5001 0000
	d) Silencer Cap	1	2306 0084 0000	30	Washer 12.5X18X0.5	1	8041 5011 0000
	e) Snap Ring RTW-14	1	9040 1006 0000	30	Washer 12.5X18X1	1	8041 5021 0000
3	S.R.Pin 3X16	1	9250 1050 0000		Standard Accessories		
4	Hanger	1	0004 0017 0000		Universal Air Joint 1/4	1	9690 0015 0000
5	Upper Plate Spacer	1	2096 0301 0000		Hexagon Wrench H1.5X65X65	1	9610 1012 0000
6	Upper Plate Assy.	1 set	0081 0303 0199		Hexagon Wrench H5	1	9610 1006 0000
	a) Upper Plate	1	0081 0303 0100		Parts for YX-280A <06> - YX-280B <06>		
	b) Ball Bearing 697MC2	1	9102 3001 0000	18	Main Shaft	1	0081 0614 0451
7	Cylinder Assy.	1 set	0081 0304 0199	18	Main Shaft	1	0081 0614 0452
	a) Cylinder	1	*	31	Bit Chuck Assy.	1 set	2057 0414 0099
	b) S.R.Pin 2.5X6	1	9250 1030 0000		a) Bit Chuck	1	2057 0414 0000
	c) S.R.Pin 2X14	1	9250 1017 0000		b) Ball 1/8 S	1	9150 3009 0000
8	Rotor	1	0081 0305 0100		c) Spring 13.5X10	1	8020 1340 0000
9	Vane	5	0081 0306 0100		d) Spring Washer	1	2331 0419 0000
10	Lower Plate Assy.	1 set	0081 0307 0299		e) Retaining Ring 10X1	1	8030 1009 0000
	a) Lower Plate	1	0081 0307 0200		Parts for YX-280E <06>		
	b) Ball Bearing 6900	1	9100 1046 0000	18	Main Shaft 3/8 Assy.	0 set	0081 0614 0659
	c) Pin 2.5X6	1	8055 1053 0000				
11	Lower Plate Spacer	1	0084 0311 0000				
12	Liner Case (A) Assy.	1 set	0158 0422 0098				
	a) Liner Case	1	*				
	b) Screw M3X8 P=0.5	1	9480 2024 0000				
	c) Rubber Plate	2	0259 0047 0000				
	d) Spring 3X5	1	8020 1288 0000				
	e) Screw MAX4	1	9480 2031 0000				
	f) O-Ring N30	1	9010 4019 0000				



YOKOTA EUROPE BV
 e-mail info@impulsetools.com http://www.impulsetools.com
 P.O. BOX 392 NL-1000 AJ AMSTERDAM PHONE: 020-625 29 53 FAX: 020-625 35 89
 Hydraulic Impulse Wrenches, Impact Wrenches, Drills, Grinders, Screw Drivers, Chippers, Scales, Pumps.