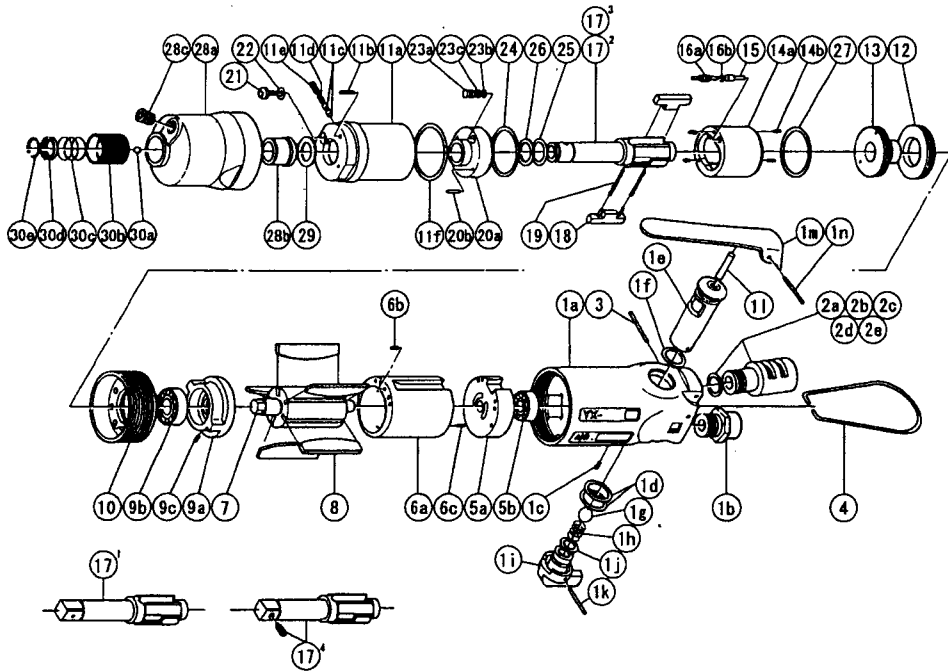


### IMPULSE WRENCH

MODELS	(YESNo.)	TOOL No.
YX-280S	(06)	0084 0000 06 00
YX-280SA	(06)	0084 0000 06 01
YX-280SB	(06)	0084 0000 06 02
YX-280SE	(06)	0084 0000 06 04



### ■ PARTS LIST

No.	Name of Parts	Per set	Parts No.	No.	Name of Parts	Per set	Parts No.		
1	Motor Case Assy.	1 set	0084 0011 0299	15	Relief Valve	1	0081 0245 0100		
	a)Motor Case	1	※ ↑	16	Spring Guide (B) Assy.	1 set	0081 0510 0199		
	b)Hose Joint	1	0237 0113 0000		a)Spring Guide B	1	※ ↑		
	c)S.R.Pin 2X5	1	9250 1010 0000		b)O-Ring 0.7X2X3.4	1	9010 6020 0000		
	d)O-Ring N15	2	9010 4008 0000	17	Main Shaft	1	0081 0614 0501		
	e)Reverse Valve Assy.	1 set	0080 0005 0099		18	Blade	2	0081 0719 0300	
	f)Reverse Valve	1	※ ↑	19	Spring 3.1X20	2	8020 1296 0000		
	g)O-Ring N12.5	1	9010 4006 0000		20	Liner Lower Plate Assy.	1 set	0158 0426 0099	
	h)Ball 5/16 R	1	9150 4002 0000	a)Liner Lower Plate		1	※ ↑		
	i)Spring 8X16	1	8020 1066 0000	b)S.R.Pin 3X8	1	9250 2022 0000			
	Reverse Lever Assy.	1 set	0084 0007 0099	21	Oil Plug	1	0081 0010 0100		
	j)Reverse Lever	1	※ ↑	22	O-Ring N3	1	9010 4025 0000		
	k)O-Ring P8	1	9010 1006 0000		23	Oil Stop Cap Assy.	1 set	0081 0602 0099	
	l)AA Pin 4X21.8	1	8051 3057 0000			a)Oil Stop Cap	1	※ ↑	
m)Throttle Lever	1	0931 0110 0000	b)O-Ring N2	1		9010 4001 0000			
n)S.R.Pin 3X25	1	9250 5001 0000	c)Back-Up Ring	1	9090 2001 0000				
2	Silencer Assy.	1 set	0081 0053 0099	24	O-Ring 1X25.2X27.2	1	9010 6012 0000		
	a)Silencer	1	※ ↑		25	O-Ring 2.3X11.8X16.4	1	9010 6019 0000	
	b)O-Ring N10	1	9010 4004 0000	26	Back-Up Ring 12X16X0.8	1	9090 1010 0000		
	c)Silencer Sheet B	1	0095 0032 0002		27	O-Ring 1.5X26.5X29.5	1	9010 6023 0000	
	d)Silencer Cap	1	2306 0084 0000	28	Hammer Case Assy.	1 set	0081 0401 0199		
e)Snap Ring RTW-14	1	9040 1006 0000	a)Hammer Case		1	0081 0401 0100			
f)Snap Ring RTW-14	1	9040 1006 0000	b)Main Shaft Bushing		1	0081 0612 0000			
3	S.R.Pin 3X16	1	9250 1050 0000	c)Socket Plug Pt1/8	1	8210 5001 0000			
4	Hanger	1	0004 0017 0000	29	★ Washer 12.5X18X0.5	1	8041 5011 0000		
	5	Upper Plate Assy.	1 set		0081 0303 0199	★ Washer 12.5X18X1	1	8041 5021 0000	
a)Upper Plate		1	0081 0303 0100		Standard Accessories				
b)Ball Bearing 697MC2	1	9102 3001 0000	Universal Air Joint 1/4	1	9690 0015 0000				
6	Cylinder Assy.	1 set	0084 0304 0199	Hexagon Wrench H1.5X65X65	1	9610 1012 0000			
	a)Cylinder	1	※ ↑	Hexagon Wrench H5	1	9610 1006 0000			
	b)S.R.Pin 2.5X6	1	9250 1030 0000	Parts for YX-280SA <06> · YX-280SB <06>					
c)S.R.Pin 2X12	1	9250 1015 0000	17	2	Main Shaft	1	0081 0614 0451		
7	Rotor	1			0081 0305 0100	3	Main Shaft	1	0081 0614 0452
	8	Vane		5	0081 0306 0100		30	Bit Chuck Assy.	1 set
9		Lower Plate Assy.		1 set	0081 0307 0299			a)Bit Chuck	1
	a)Lower Plate	1		0081 0307 0200	b)Ball 1/8 S	1		9150 3009 0000	
	b)Ball Bearing 6900	1	9100 1046 0000	c)Spring 13.5X10	1	8020 1340 0000			
c)Pin 2.5X6	1	8055 1053 0000	d)Spring Washer	1	2331 0419 0000				
10	Lower Plate Spacer	1	0084 0311 0000	e)Retaining Ring 10X1	1	8030 1009 0000			
	11	Liner Case (A) Assy.	1 set	0158 0422 0098	Parts for YX-280SE <06>				
		a)Liner Case	1	※ ↑	17	4	Main Shaft 3/8 Assy.	1 set	0081 0614 0659
		b)Screw M3X8 P=0.5	1	9480 2024 0000					
		c)Rubber Plate	2	0259 0047 0000					
		d)Spring 3X5	1	8020 1288 0000					
e)Screw M4X4		1	9480 2031 0000						
f)O-Ring N30	1	9010 4019 0000							
12	Liner Cap	1	0081 0423 0100						
	Liner Upper Plate	1	0259 0424 0100						
14	Liner Assy.	1 set	0259 0425 0199						
	a)Liner	1	※ ↑						
	b)AA Pin 2X5 <41-44HRC>	4	8052 3002 0000						



# YOKOTA EUROPE BV

e-mail info@impulsetools.com http://www.impulsetools.com

P.O. BOX 392 NL-1000 AJ AMSTERDAM PHONE: 020-625 29 53 FAX: 020-625 35 69  
Hydraulic Impulse Wrenches, Impact Wrenches, Drills, Grinders, Screw Drivers, Chippers, Scalers, Pumps.

The part "※" can not be supplied individually.  
So please order it as a unit of assembly  
shown by arrow mark (↑).

★marked parts; use one of them.