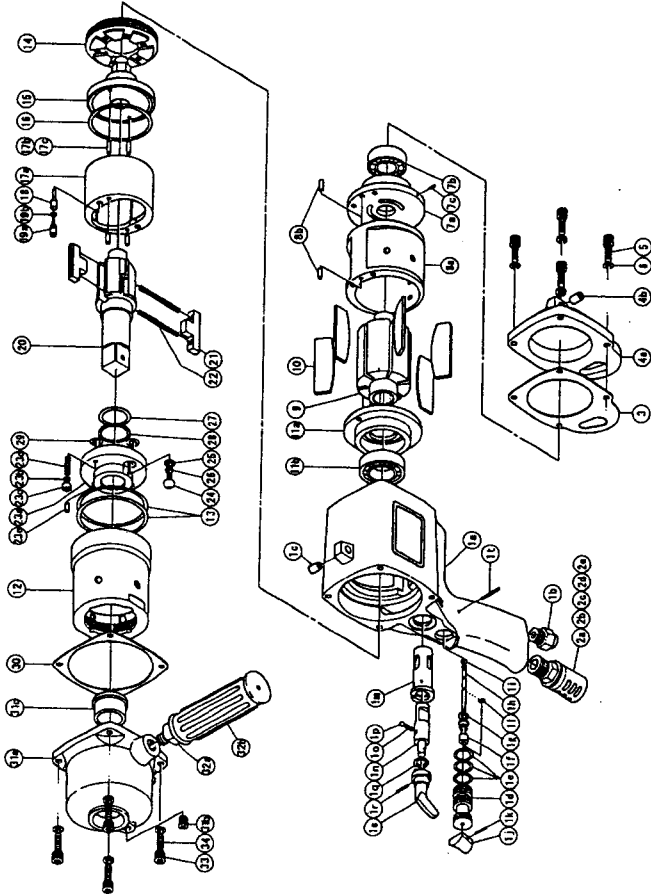




IMPULSE WRENCH

MODEL (YES/No.)	TOOL No.
YX-3000 (06)	0405 0000 06 00



PARTS LIST

No.	Name of Parts	Per set	Parts No.	No.	Name of Parts	Per set	Parts No.
1	Motor Case Assy.	1 set	0405 0011 0099	12	Liner Case	1	0405 0422 0100
	a) Motor Case	1	※ ↑	13	O-Ring N63	2	9010 4038 0000
	b) Hose Joint	1	0237 0113 0000	14	Liner Cap	1	0405 0423 0000
	c) S.R.Pin 8X12	1	9250 1110 0000	15	Liner Upper Plate	1	0405 0424 0100
	Throttle Bushing Assy.	1 set	0229 0104 0099	16	O-Ring N56	1	9010 4037 0000
	d) Throttle Bushing	1	※ ↑	17	Liner Assy.	1 set	0405 0425 0499
	e) O-Ring N15	3	9010 4008 0000		a) Liner	1	※ ↑
	Throttle Rod Bushing Assy.	1 set	0323 0105 0099		b) Pin 4.5X7.5 <41-44HRC>	2	8052 1039 0000
	f) Throttle Rod Bushing	1	※ ↑		c) Pin 5X7 <41-44HRC>	2	8052 1036 0000
	g) O-Ring No.5 (Hs90)	1	9010 3022 0000	18	Relief Valve	1	0405 0245 0000
	Throttle Rod Assy.	1 set	0229 0106 0199	19	Spring Guide (B) Assy.	1 set	0405 0510 0099
	h) Throttle Rod	1	※ ↑		a) Spring Guide B	1	※ ↑
	i) O-Ring N2	1	9010 4001 0000		b) O-Ring P3	1	9010 1001 0000
	j) Throttle Knob	1	2024 0153 0000	20	Main Shaft	1	0405 0614 0101
	k) S.R.Pin 1.5X14	1	9250 1005 0000	21	Blade	2	0405 0719 0100
	l) Snap Ring ETW-2.8	1	9040 5008 0000	22	Spring 4.8X57	2	8020 1293 0000
	m) Reverse Bushing	1	0235 0004 0000	23	Liner Lower Plate (A) Assy.	1 set	0405 0426 0498
	n) Reverse Valve	1	0235 0005 0000		a) Liner Lower Plate	1	※ ↑
	o) Spring 4X6 N=3 0.5"	1	8020 1022 0000		b) Nylon Bushing M5	1	0406 0431 0200
	p) Ball M4 S	1	9150 1005 0000		c) Bushing	1	0406 0728 0000
	q) Snap Ring IRTW-14	1	9040 3004 0000		d) Screw M5X16	1	9480 2025 0000
	r) S.R.Pin 3X14	1	9250 1049 0000		e) S.R.Pin 6X8	1	9250 2028 0000
	s) Reverse Lever	1	0048 0007 0100	24	Hex. Button Bolt M5X8 P=0.8	1	8071 1011 0000
	t) Slotted Pin G 3X24	1	8410 6024 0000	25	Washer 7.5X9.5X1.2	1	8040 1127 0000
2	Silencer Assy. PF3/8	1 set	0405 0053 0199	26	O-Ring N5	1	9010 4033 0000
	a) Silencer Body PF3/8	1	※ ↑	27	O-Ring 2.4X24.7X29.5	1	9010 6021 0000
	b) Silencer Cover	1	3048 0081 0200	28	Back-Up Ring 25X29X1	1	9090 1008 0000
	c) Silencer Sheet	1	0405 0032 0000	29	O-Ring N8	2	9010 4028 0000
	d) Joint Ring	1	1105 0116 0000	30	S-Packing B	1	0405 0003 0002
	e) O-Ring N20	1	9010 4010 0000	31	Hammer Case Assy.	1 set	0405 0401 0199
3	S-Packing A	1	0405 0003 0001		a) Hammer Case	1	0405 0401 0100
4	Motor Case Cover Assy.	1 set	0405 0001 0099		b) Socket Plug Pt1/8	1	8210 5001 0000
	a) Motor Case Cover	1	※ ↑		c) Main Shaft Bushing	1	0405 0612 0000
	b) S.R.Pin 8X12	1	9250 1110 0000	32	Dead Handle Assy	1 set	0405 0013 0099
5	Hex. Bolt M6X22X18	4	8070 3035 0000		a) Dead Handle	1	※ ↑
6	Spring Washer M6	4	9200 3006 0000		b) Dead Handle Cover	1	0405 0019 0000
7	Upper Plate Assy.	1 set	0405 0303 0199	33	Hex. Bolt M6X22X18	4	8070 3035 0000
	a) Upper Plate	1	0405 0303 0100	34	Spring Washer M6	4	9200 3006 0000
	b) Ball Bearing 6003	1	9100 1018 0000		Standard Accessories		
	c) S.R.Pin 2.5X6	1	9250 1030 0000		Touch Joint 1/4-02	1	9690 0002 0000
8	Cylinder Assy.	1 set	0405 0304 0099		Hexagon Wrench H2.5X70X70	1	9610 1014 0000
	a) Cylinder	1	※ ↑		Hexagon Wrench H5	1	9610 1006 0000
	b) S.R.Pin 4X10	2	9250 1066 0000				
9	Rotor	1	0405 0305 0000				
10	Vane	6	0405 0306 0100				
11	Lower Plate Assy.	1 set	0405 0307 0199				
	a) Lower Plate	1	0405 0307 0100				
	b) Ball Bearing 6905	1	9100 1047 0000				

The part "※" can not be supplied individually.
 So please order it as a unit of assembly
 shown by arrow mark (↑).

YOKOTA EUROPE BV
 e-mail info@impulsetools.com http://www.impulsetools.com
 P.O. BOX 392 NL-1000 AJ AMSTERDAM PHONE: 020-625 28 53 FAX: 020-625 35 69



Hydraulic Impulse Wrenches, Impact Wrenches, Drills, Grinders, Screw Drivers, Chippers, Saws, Pumps.