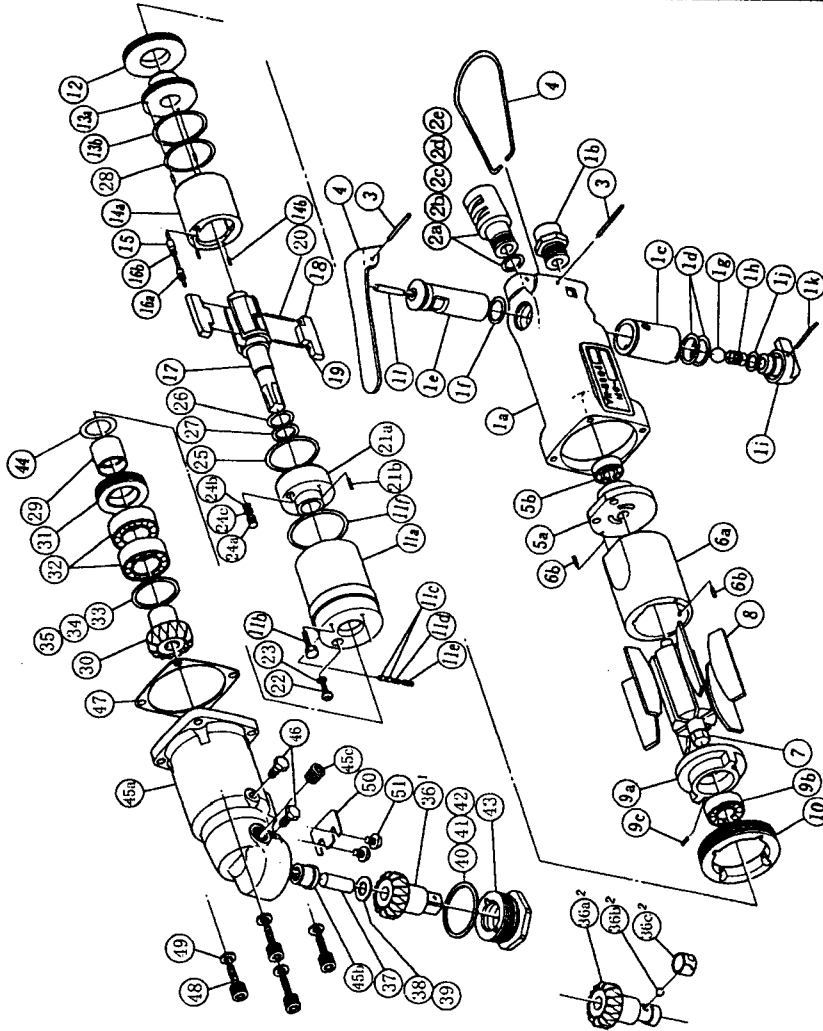




yokota
FA SYSTEM & AIR TOOLS

IMPULSE WRENCH

MODELS (YES/No.)	TOOL No.
YX-500C (04)	0083 0000 04 00
YX-500CA (04)	0083 0000 04 01



YOKOTA EUROPE BV
 e-mail info@impulsetools.com <http://www.impulsetools.com>
 P.O. BOX 382 NL-1000 AJ AMSTERDAM PHONE: 020-625 29 53 FAX: 020-625 35 69
 Hydraulic Impulse Wrenches, Impact Wrenches, Drills, Grinders, Screw Drivers, Chippers, Scales, Pumps.



■ PARTS LIST

No.	Name of Parts	Per set	Parts No.	No.	Name of Parts	Per set	Parts No.
1	Motor Case Assy.	1 set	0083 0011 0199	17	Liner Shaft	1	0083 0796 0100
	a)Motor Case	1	*	18	Blade	2	0080 0719 0200
	b)Hose Joint	1	0237 0113 0000	19	S.R.Pin 2X5	4	9250 1010 0000
	c)Reverse Bushing	1	0080 0004 0000	20	Spring 3.4X22.7	2	8020 1253 0000
	d)O-Ring N15	2	9010 4008 0000	21	Liner Lower Plate Assy.	1 set	0135 0426 0099
	Reverse Valve Assy.	1 set	0080 0005 0099		a)Liner Lower Plate	1	*
	e)Reverse Valve	1	*		b)S.R.Pin 3X8	1	9250 2022 0000
	f)O-Ring N12.5	1	9010 4006 0000	22	Oil Plug	1	0081 0010 0100
	g)Ball 5/16 R	1	9150 4002 0000	23	O-Ring N3	1	9010 4025 0000
	h)Spring 8X16	1	8020 1066 0000	24	Oil Stop Cap Assy.	1 set	0081 0602 0099
	Reverse Lever Assy.	1 set	0932 0007 0099		a)Oil Stop Cap	1	*
	i)Reverse Lever	1	*		b)O-Ring N2	1	9010 4001 0000
	j)O-Ring P8	1	9010 1006 0000		c)Back-Up Ring	1	9090 2001 0000
	k)S.R.Pin 2X20	1	9250 1021 0000	25	O-Ring 1X29.2X31.2	1	9010 6032 0000
	l)AA Pin 4X21.8	1	8051 3057 0000	26	O-Ring 2.3X11.8X16.4	1	9010 6019 0000
	m)Throttle Lever	1	0931 0110 0000	27	Back-Up Ring 12X16X0.8	1	9090 1010 0000
	n)S.R.Pin 3X25	1	9250 5001 0000	28	O-Ring 1.3X28.7X31.3	1	9010 6010 0000
	Silencer Assy.	1 set	0081 0053 0099	29	Spacer	1	0083 0119 0000
2	a)Silencer	1	*	30	Bevel Gear Shaft	1	0118 0640 0000
	b)O-Ring N10	1	9010 4004 0000	31	Bearing Cap	1	0083 0618 0000
	c)Silencer Sheet B	1	0095 0032 0002	32	Ball Bearing 6902	2	9100 1036 0000
	d)Silencer Cap	1	2306 0084 0000	33	St-Packing 25.5X27.5X0.1	1	8011 1047 0000
	e)Snap Ring RTW-14	1	9040 1006 0000	34	St-Packing 25.5X27.5X0.2	1	8011 1048 0000
3	S.R.Pin 3X16	1	9250 1050 0000	35	St-Packing 25.5X27.5X0.3	1	8011 1049 0000
4	Hanger	1	0040 0017 0000	36	Spindle 3/8	1	0118 0641 0000
5	Upper Plate Assy.	1 set	0080 0303 0299	37	Pin 8X19	1	8051 1235 0000
	a)Upper Plate	1	0080 0303 0200	38	Washer 8.2X14X0.6	1	8040 1071 0000
	b)Ball Bearing 607	1	9100 1003 0000	39	Washer 8.2X14X0.3	1	8011 1044 0000
6	Cylinder Assy.	1 set	0080 0304 0199	40	St-Packing 28.2X32X0.1	1	8011 1045 0000
	a)Cylinder	1	*	41	St-Packing 28.2X32X0.2	1	8011 1046 0000
	b)S.R.Pin 2X6	2	9250 1011 0000	42	St-Packing 28.2X32X0.3	1	0083 0412 0199
7	Rotor	1	0080 0305 0000	43	Hammer Case Cap Assy.	1 set	8041 5011 0000
8	Vane	6	0080 0306 0100	44	Washer 12.5X18X0.5	1	8041 5021 0000
9	Lower Plate Assy.	1 set	0083 0307 0099	45	Hammer Case Assy.	1 set	0083 0401 0099
	a)Lower Plate	1	0083 0307 0000		a)Hammer Case	1	0083 0401 0000
	b)Ball Bearing 6900	1	9100 1046 0000		b)Spindle Bushing B	1	0118 0643 0002
	c)Pin 2.5X6	1	8055 1053 0000		c)Socket Plug P1/8	1	8210 5001 0000
10	Lower Plate Spacer	1	0083 0311 0000	46	Hex Set Bolt M5X8.5 P=0.8	2	8070 7008 0000
11	Liner Case (A) Assy.	1 set	0083 0422 0598	47	S-Packing	1	0083 0003 0000
	a)Liner Case	1	*	48	Hex Bolt M4X16 P=0.7	4	8070 3112 0000
	b)Adjust Bolt	1	0083 0522 0100	49	Spring Washer M4	4	9200 3004 0000
	c)Rubber Plate	2	0259 0047 0000	50	Cover Plate	1	0083 0014 0000
	d)Spring 3X5	1	8020 1288 0000	51	+ Screw M4X6 P=0.7	2	9460 2003 0000
	e)Screw M4X4	1	9480 2031 0000		Standard Accessories		
	f)O-Ring N32	1	9010 4014 0000		Universal Air Joint 1/4	1	9690 0015 0000
12	Liner Cap	1	0086 0423 0000		TF Pin 2X90	1	8051 6001 0000
13	Liner Upper Plate Assy.	1 set	0135 0424 0199				
	a)Liner Upper Plate	1	*				
	b)O-Ring N28	1	9010 4029 0000				
14	Liner Assy.	1 set	0080 0425 0499	36	Parts for YX-500CA <04>	1 set	0118 0641 0199
	a)Liner	1	*		a)Spindle (A) Assy.	1	*
	b)Pin 2.9X6 <41-44HRC>	4	8052 1030 0000		b)Ball M4 S	1	9150 1005 0000
15	Relief Valve	1	0081 0245 0000		c)Band	1	2032 0415 0000
16	Spring Guide (B) Assy.	1 set	0080 0510 0199				
	a)Spring Guide B	1	*				
	b)O-Ring 0.7X2X3.4	1	9010 6020 0000				

The part "*" can not be supplied individually.
 So please order it as a unit of assembly
 shown by arrow mark (↑).
 * marked parts: use one of them.