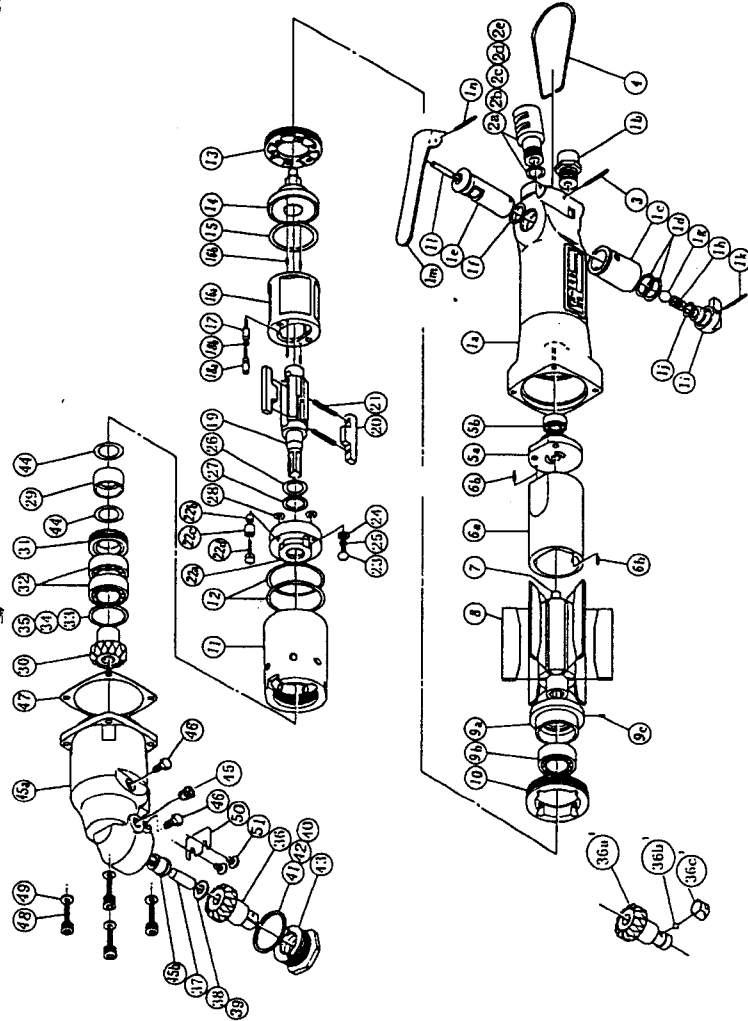




IMPULSE WRENCH

MODELS (YES/No.)	TOOL No.
YX-700C (04)	0133 0000 04 00
YX-700CA (04)	0133 0000 04 01



PARTS LIST

No.	Name of Parts	Per set	Parts No.	No.	Name of Parts	Per set	Parts No.
1	Motor Case Assy.	1 set	0132 0011 0199	20	Blade	2	0129 0719 0300
	a)Motor Case	1	※ 1	21	Spring 3.5X25	2	8020 1306 0000
	b)Hose Joint	1	0237 0113 0000	22	Liner Lower Plate (A) Assy.	1 set	0078 0426 0398
	c)Reverse Bushing	1	0080 0004 0000		a)Liner Lower Plate	1	※ 1
	d)O-Ring N15	2	9010 4008 0000		b)Nylon Bushing M3	1	0260 0431 0000
	Reverse Valve Assy.	1 set	0080 0005 0099		c)Bushing	1	0260 0728 0000
	e)Reverse Valve	1	※ 1		d)Adjust Bolt	1	0078 0522 0100
	f)O-Ring N12.5	1	9010 4006 0000	23	Oil Plug M4	1	0048 0010 0000
	g)Ball 5/16 R	1	9150 4002 0000	24	Washer 6.5X8.5X1.1	1	8040 1073 0000
	h)Spring 8X16	1	8020 1068 0000	25	O-Ring N4	1	9010 4021 0000
	Reverse Lever Assy.	1 set	0932 0007 0099	26	O-Ring 2.8X12.8X18.4 Hs70*	1	9010 6014 0000
	i)Reverse Lever	1	※ 1	27	Back-Up Ring 13X18X0.6	1	9090 1005 0000
	j)O-Ring P8	1	9010 1006 0000	28	O-Ring N5	2	9010 4033 0000
	k)S.R.Pin 2X20	1	9250 1021 0000	29	Spacer	1	0133 0119 0000
	l)AA Pin 4X21.8	1	8051 3057 0000	30	Bevel Gear Shaft	1	0083 0618 0000
	m)Throttle Lever	1	0931 0110 0000	31	Bearing Cap	1	0083 0618 0000
	n)S.R.Pin 3X25	1	9250 5001 0000	32	Ball Bearing 6902	2	9100 1036 0000
2	Silencer Assy.	1 set	0081 0053 0099	33	★ St-Packing 25.5X27.5X0.1	1	8011 1047 0000
	a)Silencer	1	※ 1	34	★ St-Packing 25.5X27.5X0.2	1	8011 1048 0000
	b)O-Ring N10	1	9010 4004 0000	35	★ St-Packing 25.5X27.5X0.3	1	8011 1049 0000
	c)Silencer Sheet B	1	0095 0032 0002	36	Spindle 3/8	1	0118 0641 0000
	d)Silencer Cap	1	2306 0084 0000	37	Pin 8X19	1	8051 1235 0000
	e)Snap Ring RTW-14	1	9040 1006 0000	38	★ Washer 8.2X14X0.6	1	8040 1022 0000
3	S.R.Pin 3X16	1	9250 1050 0000	39	★ Washer 8.2X14X0.3	1	8040 1071 0000
4	Hanger	1	0004 0017 0000	40	★ St-Packing 28.2X32X0.1	1	8011 1044 0000
5	Upper Plate Assy.	1 set	0080 0303 0299	41	★ St-Packing 28.2X32X0.2	1	8011 1045 0000
	a)Upper Plate	1	0080 0303 0200	42	★ St-Packing 28.2X32X0.3	1	8011 1046 0000
	b)Ball Bearing 607	1	9100 1003 0000	43	Hammer Case Cap Assy.	1 set	0083 0412 0199
6	Cylinder Assy.	1 set	0132 0304 0199	44	Washer 13.5X20X0.5	2	8041 5020 0000
	a)Cylinder	1	※ 1	45	Hammer Case Assy.	1 set	0133 0401 0099
	b)S.R.Pin 2X6	2	9250 1011 0000		a)Hammer Case	1	0133 0401 0000
7	Rotor	1	0123 0305 0100		b)Spindle Bushing B	1	0118 0643 0000
8	Vane	6	0132 0306 0000		c)Socket Plug Pt1/8	1	8210 5001 0000
9	Lower Plate Assy.	1 set	0132 0307 0199	46	Hex.Set Bolt M5X8.5 P=0.8	2	8070 7008 0000
	a)Lower Plate	1	0132 0307 0100	47	S-Packing D	1	0051 0003 0004
	b)Ball Bearing 6902	1	9100 1036 0000	48	Hex. Bolt M4X14 P=0.7	4	8070 3008 0000
	c)Pin 2.5X6	1	8055 1053 0000	49	Spring Washer M4	4	9200 3004 0000
10	Lower Plate Spacer	1	0083 0311 0000	50	Cover Plate	1	0083 0014 0000
11	Liner Case	1	0130 0422 0000	51	+ Screw M4X6 P=0.7	2	9460 2003 0000
12	O-Ring N38	2	9010 4016 0000		Standard Accessories		
13	Liner Cap	1	0048 0423 0000		Universal Air Joint 1/4	1	9690 0015 0000
14	Liner Upper Plate	1	0077 0424 0000		TF Pin 2X90	1	8051 6001 0000
15	O-Ring N32	1	9010 4014 0000		Parts for YX-700CA <04>		
16	Liner Assy.	1 set	0129 0425 0399	36	Spindle (A) Assy.	1 set	0118 0641 0199
	a)Liner	1	※ 1		a)Spindle A	1	※ 1
	b)Pin 3X5 <41-44HRC>	4	8052 1031 0000		b)Ball M4 S	1	9150 1005 0000
17	Relief Valve	1	0129 0245 0000		c)Band	1	2032 0415 0000
18	Spring Guide (B) Assy.	1 set	0129 0510 0099				
	a)Spring Guide B	1	※ 1				
	b)O-Ring N2	1	9010 4001 0000				
19	Liner Shaft	1	0133 0796 0100				

The part "※" can not be supplied individually.
 So please order it as a unit of assembly
 shown by arrow mark (↑).
 ★ marked parts; use one of them.



YOKOTA EUROPE BV
 e-mail info@impulsetools.com http://www.impulsetools.com
 P.O. BOX 382 NL-1000 AJ AMSTERDAM PHONE: 020-625 28 53 FAX: 020-625 35 69
 Hydraulic Impulse Wrenches, Impact Wrenches, Drills, Grinders, Screw Drivers, Chippers, Scales, Pumps.